

## Anti-TP63 antibody

|                 |   |
|-----------------|---|
| <b>Cat. No.</b> | ml121090  |
| <b>Package</b>  | 25 µl/100 µl/200 µl                                     |
| <b>Storage</b>  | -20°C, pH7.4 PBS, 0.05% NaN <sub>3</sub> , 40% Glycerol |

### Product overview

|                     |                                      |
|---------------------|--------------------------------------|
| <b>Description</b>  | Anti-TP63 rabbit polyclonal antibody |
| <b>Applications</b> | ELISA, WB, IHC                       |
| <b>Immunogen</b>    | Fusion protein of human TP63         |
| <b>Reactivity</b>   | Human, Mouse, Rat                    |
| <b>Content</b>      | 0.3 mg/ml                            |
| <b>Host species</b> | Rabbit                               |
| <b>Ig class</b>     | Immunogen-specific rabbit IgG        |
| <b>Purification</b> | Antigen affinity purification        |

### Target information

|                  |  |
|------------------|--|
| <b>Symbol</b>    | TP63   |
| <b>Full name</b> | tumor protein p63  |
| <b>Synonyms</b>  | AIS, KET, LMS, NBP, RHS, p40, p51, p63, EEC3, OFC8, p73H, p73L, SHFM4, TP53L, TP73L, p53CP, TP53CP, B(p51A), B(p51B) |
| <b>Swissprot</b> | Q9H3D4   |

### Target Background

This gene encodes a member of the p53 family of transcription factors. An animal model, p63 <sup>-/-</sup> mice, has been useful in defining the role this protein plays in the development and maintenance of stratified epithelial tissues. p63 <sup>-/-</sup> mice have several developmental defects which include the lack of limbs and other tissues, such as teeth and mammary glands, which develop as a result of interactions between mesenchyme and epithelium. Mutations in this gene are associated with ectodermal dysplasia, and cleft lip/palate syndrome 3 (EEC3); split-hand/foot malformation 4 (SHFM4); ankyloblepharon-ectodermal defects-cleft lip/palate; ADULT syndrome (acro-dermato-ungual-lacrima-tooth); limb-mammary syndrome; Rap-Hodgkin syndrome (RHS); and orofacial cleft 8. Both alternative splicing and the use of alternative promoters results in multiple transcript variants encoding different proteins.

订购热线: 4008-898-798

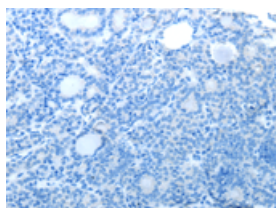
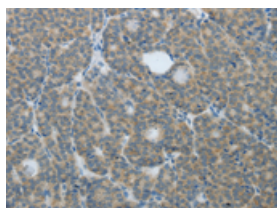
## Applications

### Immunohistochemistry

Predicted cell location: Cytoplasm

Positive control: Human thyroid cancer

Recommended dilution: 25-100

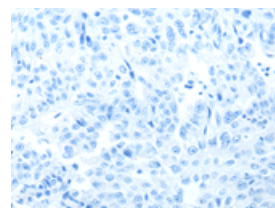
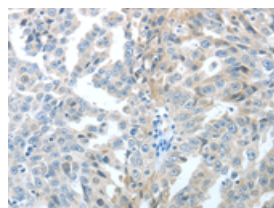


The image on the left is immunohistochemistry of paraffin-embedded Human thyroid cancer tissue using ml121090(TP63 Antibody) at dilution 1/20, on the right is treated with fusion protein. (Original magnification:  $\times 200$ )

Predicted cell location: Cytoplasm

Positive control: Human ovarian cancer

Recommended dilution: 25-100



The image on the left is immunohistochemistry of paraffin-embedded Human ovarian cancer tissue using ml121090(TP63 Antibody) at dilution 1/20, on the right is treated with fusion protein. (Original magnification:  $\times 200$ )

### Western blotting

Predicted band size: 77 kDa

Positive control: Mouse bladder tissue

Recommended dilution: 200-1000

Gel: 10% SDS-PAGE

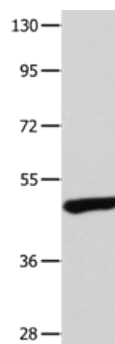
Lysate: 40  $\mu$ g

Lane: Mouse bladder tissue

Primary antibody: ml121090(TP63 Antibody) at dilution 1/400

Secondary antibody: Goat anti rabbit IgG at 1/8000 dilution

Exposure time: 2 minutes



### ELISA

Recommended dilution: 1000-2000

联系电话: 4008-898-798, 021-61725725

联系QQ: 2881505695, 2881505696

邮箱: [mlbio\\_cn@yeah.net](mailto:mlbio_cn@yeah.net)

网址: [www.mlbio.cn](http://www.mlbio.cn)