

## Anti-RRM1 antibody

<b>Cat. No.</b>	ml121160
<b>Package</b>	25 µl/100 µl/200 µl
<b>Storage</b>	-20°C, pH7.4 PBS, 0.05% NaN <sub>3</sub> , 40% Glycerol

### Product overview

<b>Description</b>	Anti-RRM1 rabbit polyclonal antibody
<b>Applications</b>	ELISA, WB, IHC
<b>Immunogen</b>	Fusion protein of human RRM1
<b>Reactivity</b>	Human, Mouse
<b>Content</b>	0.1 mg/ml
<b>Host species</b>	Rabbit
<b>Ig class</b>	Immunogen-specific rabbit IgG
<b>Purification</b>	Antigen affinity purification

### Target information

<b>Symbol</b>	RRM1
<b>Full name</b>	Ribonucleotide reductase M1
<b>Synonyms</b>	R1; RR1; RIR1
<b>Swissprot</b>	P23921

### Target Background

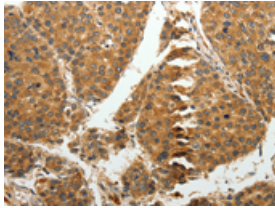
This gene encodes one of two non-identical subunits that constitute ribonucleoside-diphosphate reductase, an enzyme essential for the production of deoxyribonucleotides prior to DNA synthesis in S phase of dividing cells. It is one of several genes located in the imprinted gene domain of 11p15.5, an important tumor-suppressor gene region. Alterations in this region have been associated with the Beckwith-Wiedemann syndrome, Wilms tumor, rhabdomyosarcoma, adrenocortical carcinoma, and lung, ovarian, and breast cancer. This gene may play a role in malignancies and disease that involve this region.

订购热线: 4008-898-798

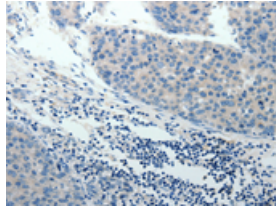
## Applications

### Immunohistochemistry

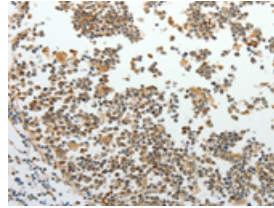
Predicted cell location: Cytoplasm  
Positive control: Human liver cancer  
Recommended dilution: 25-100



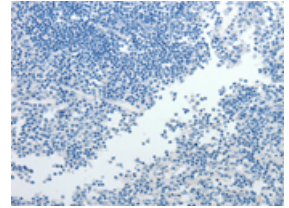
The image on the left is immunohistochemistry of paraffin-embedded Human liver cancer tissue using ml121160(RRM1 Antibody) at dilution 1/15, on the right is treated with fusion protein. (Original magnification:  $\times 200$ )



Predicted cell location: Cytoplasm  
Positive control: Human tonsil  
Recommended dilution: 25-100



The image on the left is immunohistochemistry of paraffin-embedded Human tonsil tissue using ml121160(RRM1 Antibody) at dilution 1/15, on the right is treated with fusion protein. (Original magnification:  $\times 200$ )



### Western blotting

Predicted band size: 90 kDa  
Positive control: Hela and 231 cells  
Recommended dilution: 200-1000

Gel: 10% SDS-PAGE

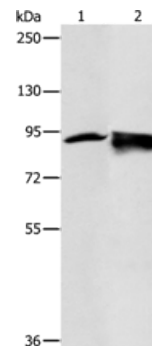
Lysate: 50  $\mu$ g

Lane 1-2: Hela cells, 231 cells

Primary antibody: ml121160(RRM1 Antibody) at dilution 1/200

Secondary antibody: Goat anti rabbit IgG at 1/8000 dilution

Exposure time: 1 minute



### ELISA

Recommended dilution: 1000-2000

联系电话: 4008-898-798, 021-61725725

联系QQ: 2881505695, 2881505696

邮箱: [mlbio\\_cn@yeah.net](mailto:mlbio_cn@yeah.net)

网址: [www.mlbio.cn](http://www.mlbio.cn)