

Anti-SRC antibody

Cat. No.	ml121267
Package	25 µl/100 µl/200 µl
Storage	-20°C, pH7.4 PBS, 0.05% NaN ₃ , 40% Glycerol

Product overview

Description	Anti-SRC rabbit polyclonal antibody
Applications	ELISA, WB, IHC
Immunogen	Fusion protein of human SRC
Reactivity	Human, Mouse, Rat
Content	0.2 mg/ml
Host species	Rabbit
Ig class	Immunogen-specific rabbit IgG
Purification	Antigen affinity purification

Target information

Symbol	SRC
Full name	SRC proto-oncogene, non-receptor tyrosine kinase
Synonyms	ASV; SRC1; c-SRC; p60-Src
Swissprot	P12931

Target Background

This gene is highly similar to the v-src gene of Rous sarcoma virus. This proto-oncogene may play a role in the regulation of embryonic development and cell growth. The protein encoded by this gene is a tyrosine-protein kinase whose activity can be inhibited by phosphorylation by c-SRC kinase. Mutations in this gene could be involved in the malignant progression of colon cancer. Two transcript variants encoding the same protein have been found for this gene.

订购热线: 4008-898-798

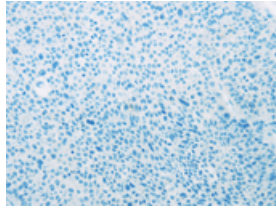
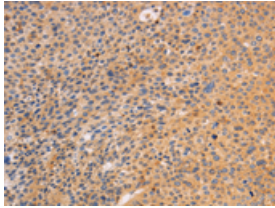
Applications

Immunohistochemistry

Predicted cell location: Cytoplasm

Positive control: Human liver cancer

Recommended dilution: 15-50

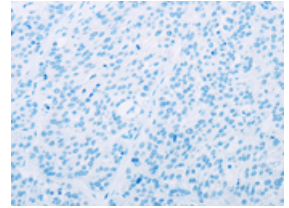
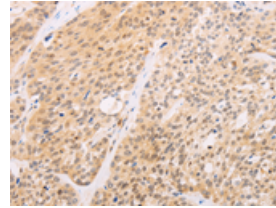


The image on the left is immunohistochemistry of paraffin-embedded Human liver cancer tissue using ml121267(SRC Antibody) at dilution 1/10, on the right is treated with fusion protein. (Original magnification: $\times 200$)

Predicted cell location: Cytoplasm

Positive control: Human esophagus cancer

Recommended dilution: 15-50



The image on the left is immunohistochemistry of paraffin-embedded Human esophagus cancer tissue using ml121267(SRC Antibody) at dilution 1/10, on the right is treated with fusion protein. (Original magnification: $\times 200$)

Western blotting

Predicted band size: 60 kDa

Positive control: PC3 cells

Recommended dilution: 200-1000

Gel: 10%SDS-PAGE

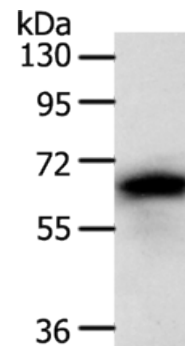
Lysate: 40 μ g

Lane: PC3 cells

Primary antibody: ml121267(SRC Antibody) at dilution 1/100

Secondary antibody: Goat anti rabbit IgG at 1/8000 dilution

Exposure time: 1 minute



ELISA

Recommended dilution: 1000-2000

联系电话: 4008-898-798, 021-61725725

联系QQ: 2881505695, 2881505696

邮箱: mlbio_cn@yeah.net

网址: www.mlbio.cn