

## Anti-TGM2 antibody

<b>Cat. No.</b>	ml121329
<b>Package</b>	25 µl/100 µl/200 µl
<b>Storage</b>	-20°C, pH7.4 PBS, 0.05% NaN <sub>3</sub> , 40% Glycerol

### Product overview

<b>Description</b>	Anti-TGM2 rabbit polyclonal antibody
<b>Applications</b>	ELISA, WB, IHC
<b>Immunogen</b>	Fusion protein of human TGM2
<b>Reactivity</b>	Human, Mouse
<b>Content</b>	0.1 mg/ml
<b>Host species</b>	Rabbit
<b>Ig class</b>	Immunogen-specific rabbit IgG
<b>Purification</b>	Antigen affinity purification

### Target information

<b>Symbol</b>	TGM2
<b>Full name</b>	Transglutaminase 2 (C polypeptide, protein-glutamine-gamma-glutamyltransferase)
<b>Synonyms</b>	TG2; TGC; GNAH; G-ALPHA-h
<b>Swissprot</b>	P21980

### Target Background

Transglutaminases are enzymes that catalyze the crosslinking of proteins by epsilon-gamma glutamyl lysine isopeptide bonds. While the primary structure of transglutaminases is not conserved, they all have the same amino acid sequence at their active sites and their activity is calcium-dependent. The protein encoded by this gene acts as a monomer, is induced by retinoic acid, and appears to be involved in apoptosis. Finally, the encoded protein is the autoantigen implicated in celiac disease. Two transcript variants encoding different isoforms have been found for this gene.

订购热线: 4008-898-798

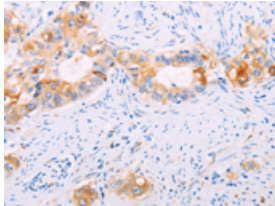
## Applications

### Immunohistochemistry

Predicted cell location: Cytoplasm

Positive control: Human cervical cancer

Recommended dilution: 15-50

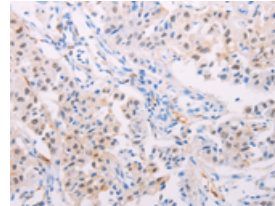


The image on the left is immunohistochemistry of paraffin-embedded Human cervical cancer tissue using ml121329(TGM2 Antibody) at dilution 1/15, on the right is treated with fusion protein. (Original magnification:  $\times 200$ )

Predicted cell location: Cytoplasm

Positive control: Human lung cancer

Recommended dilution: 15-50



The image on the left is immunohistochemistry of paraffin-embedded Human lung cancer tissue using ml121329(TGM2 Antibody) at dilution 1/15, on the right is treated with fusion protein. (Original magnification:  $\times 200$ )

### Western blotting

Predicted band size: 77 kDa

Positive control: Lovo and hela cells, human liver cancer and fetal liver tissue

Recommended dilution: 200-1000

Gel: 10% SDS-PAGE

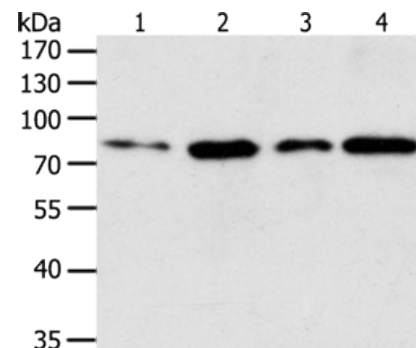
Lysate: 50  $\mu$ g

Lane 1-4: Lovo cells, hela cells, human liver cancer tissue, Human fetal liver tissue

Primary antibody: ml121329(TGM2 Antibody) at dilution 1/150

Secondary antibody: Goat anti rabbit IgG at 1/8000 dilution

Exposure time: 1 minute



### ELISA

Recommended dilution: 1000-2000

联系电话: 4008-898-798, 021-61725725

联系QQ: 2881505695, 2881505696

邮箱: [mlbio\\_cn@yeah.net](mailto:mlbio_cn@yeah.net)

网址: [www.mlbio.cn](http://www.mlbio.cn)