

## Anti-ATPIF1 antibody

<b>Cat. No.</b>	ml121403
<b>Package</b>	25 µl/100 µl/200 µl
<b>Storage</b>	-20°C, pH7.4 PBS, 0.05% NaN <sub>3</sub> , 40% Glycerol

### Product overview

<b>Description</b>	Anti-ATPIF1 rabbit polyclonal antibody
<b>Applications</b>	ELISA, WB, IHC
<b>Immunogen</b>	Fusion protein of human ATPIF1
<b>Reactivity</b>	Human
<b>Content</b>	0.2 mg/ml
<b>Host species</b>	Rabbit
<b>Ig class</b>	Immunogen-specific rabbit IgG
<b>Purification</b>	Antigen affinity purification

### Target information

<b>Symbol</b>	ATPIF1
<b>Full name</b>	ATPase inhibitory factor 1
<b>Synonyms</b>	IP; ATPi; ATPIP
<b>Swissprot</b>	Q9UII2

### Target Background

ATPase inhibitor, mitochondrial is an enzyme that in humans is encoded by the ATPIF1 gene. This gene encodes a mitochondrial ATPase inhibitor. Alternative splicing occurs at this locus and three transcript variants encoding distinct isoforms have been identified. It prevents ATPase from switching to ATP hydrolysis during collapse of the electrochemical gradient, for example during oxygen deprivation ATP synthase inhibitor forms a one to one complex with the F1 ATPase, possibly by binding at the alpha-beta interface. It is thought to inhibit ATP synthesis by preventing the release of ATP. The inhibitor has two oligomeric states, dimer (the active state) and tetramer.

订购热线: 4008-898-798

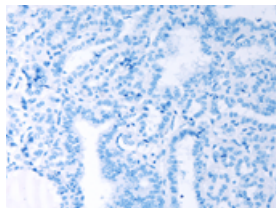
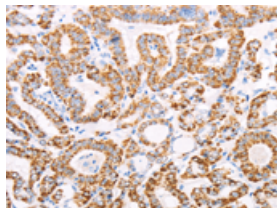
## Applications

### Immunohistochemistry

Predicted cell location: Cytoplasm

Positive control: Human thyroid cancer

Recommended dilution: 50-200

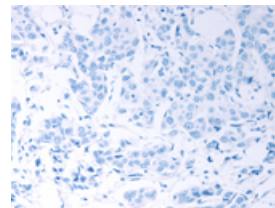
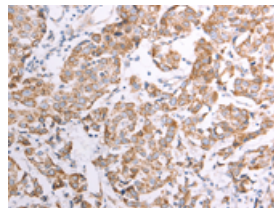


The image on the left is immunohistochemistry of paraffin-embedded Human thyroid cancer tissue using ml121403(ATPIF1 Antibody) at dilution 1/50, on the right is treated with fusion protein. (Original magnification:  $\times 200$ )

Predicted cell location: Cytoplasm

Positive control: Human breast cancer

Recommended dilution: 50-200



The image on the left is immunohistochemistry of paraffin-embedded Human breast cancer tissue using ml121403(ATPIF1 Antibody) at dilution 1/50, on the right is treated with fusion protein. (Original magnification:  $\times 200$ )

### Western blotting

Predicted band size: 12 kDa

Positive control: Hela, Jurkat, MCF7 and A431 cells

Recommended dilution: 1000-5000

Gel: 10+12+15% SDS-PAGE

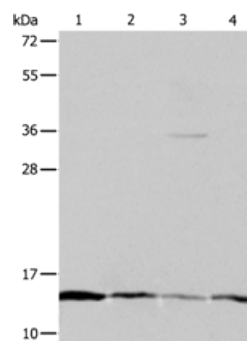
Lysate: 40  $\mu$ g

Lane 1-4: Hela cells, Jurkat cells, MCF7 cells, A431 cells

Primary antibody: ml121403(ATPIF1 Antibody) at dilution 1/1200

Secondary antibody: Goat anti rabbit IgG at 1/8000 dilution

Exposure time: 2 minutes



### ELISA

Recommended dilution: 2000-10000

联系电话: 4008-898-798, 021-61725725

联系QQ: 2881505695, 2881505696

邮箱: [mlbio\\_cn@yeah.net](mailto:mlbio_cn@yeah.net)

网址: [www.mlbio.cn](http://www.mlbio.cn)