

Anti-AASDHPPT antibody

Cat. No.	ml121436
Package	25 µl/100 µl/200 µl
Storage	-20°C, pH7.4 PBS, 0.05% NaN ₃ , 40% Glycerol

Product overview

Description	Anti-AASDHPPT rabbit polyclonal antibody
Applications	ELISA, WB, IHC
Immunogen	Fusion protein of human AASDHPPT
Reactivity	Human, Mouse, Rat
Content	0.2 mg/ml
Host species	Rabbit
Ig class	Immunogen-specific rabbit IgG
Purification	Antigen affinity purification

Target information

Symbol	AASDHPPT
Full name	Aminoadipate-semialdehyde dehydrogenase-phosphopantetheinyl transferase
Synonyms	LYS2; LYS5; CGI-80; AASD-PPT
Swissprot	Q9NRN7

Target Background

The protein encoded by this gene is similar to *Saccharomyces cerevisiae* LYS5, which is required for the activation of the alpha-aminoadipate dehydrogenase in the biosynthetic pathway of lysine. Yeast alpha-aminoadipate dehydrogenase converts alpha-biosynthetic-aminoadipate semialdehyde to alpha-aminoadipate. It has been suggested that defects in the human gene result in pipecolic acidemia.

订购热线: 4008-898-798

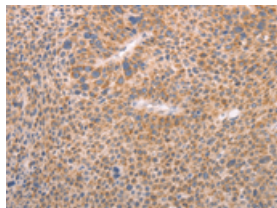
Applications

Immunohistochemistry

Predicted cell location: Cytoplasm

Positive control: Human liver cancer

Recommended dilution: 50-200



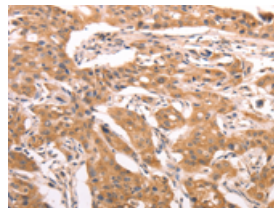
The image on the left is immunohistochemistry of paraffin-embedded Human liver cancer tissue using ml121436(AASDHPPT Antibody) at dilution 1/30, on the right is treated with fusion protein. (Original magnification: $\times 200$)



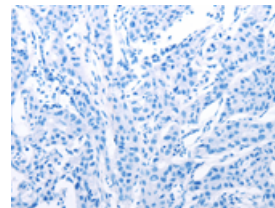
Predicted cell location: Cytoplasm

Positive control: Human lung cancer

Recommended dilution: 50-200



The image on the left is immunohistochemistry of paraffin-embedded Human lung cancer tissue using ml121436(AASDHPPT Antibody) at dilution 1/30, on the right is treated with fusion protein. (Original magnification: $\times 200$)



Western blotting

Predicted band size: 36 kDa

Positive control: Human fetal brain tissue

Recommended dilution: 500-2000

Gel: 10% SDS-PAGE

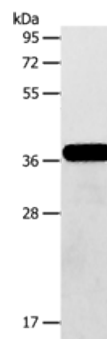
Lysate: 40 μ g

Lane: Human fetal brain tissue

Primary antibody: ml121436(AASDHPPT Antibody) at dilution 1/600

Secondary antibody: Goat anti rabbit IgG at 1/8000 dilution

Exposure time: 30 seconds



ELISA

Recommended dilution: 2000-5000

联系电话: 4008-898-798, 021-61725725

联系QQ: 2881505695, 2881505696

邮箱: mlbio_cn@yeah.net

网址: www.mlbio.cn