

## Anti-ACY3 antibody

<b>Cat. No.</b>	ml121490
<b>Package</b>	25 µl/100 µl/200 µl
<b>Storage</b>	-20°C, pH7.4 PBS, 0.05% NaN <sub>3</sub> , 40% Glycerol

### Product overview

<b>Description</b>	Anti-ACY3 rabbit polyclonal antibody
<b>Applications</b>	ELISA, WB, IHC
<b>Immunogen</b>	Fusion protein of human ACY3
<b>Reactivity</b>	Human, Mouse
<b>Content</b>	0.3 mg/ml
<b>Host species</b>	Rabbit
<b>Ig class</b>	Immunogen-specific rabbit IgG
<b>Purification</b>	Antigen affinity purification

### Target information

<b>Symbol</b>	ACY3
<b>Full name</b>	Aspartoacylase (aminocyclase) 3
<b>Synonyms</b>	ACY-3; HCBP1
<b>Swissprot</b>	Q96HD9

### Target Background

Acy3, which encodes a deduced 318-amino acid protein with a calculated molecular mass of about 35.2 kD. Acy3 has no membrane domain, but it contains consensus sites for N-glycosylation, tyrosine sulfation, tyrosine and threonine phosphorylation, and myristoylation. Northern blot analysis detected high expression of an approximately 1.4-kb Acy3 transcript in kidney, followed by liver. Weaker expression was detected in heart, small intestine, brain, lung, testis, and stomach. Testis expressed an additional transcript of about 2.2 kb.

订购热线: 4008-898-798

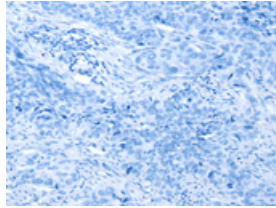
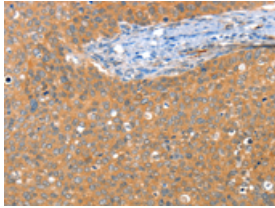
## Applications

### Immunohistochemistry

Predicted cell location: Cytoplasm

Positive control: Human cervical cancer

Recommended dilution: 25-100

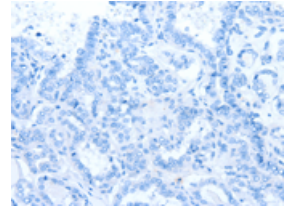
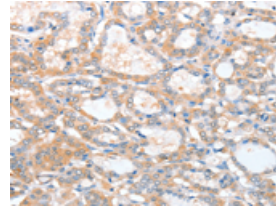


The image on the left is immunohistochemistry of paraffin-embedded Human cervical cancer tissue using ml121490(ACY3 Antibody) at dilution 1/25, on the right is treated with fusion protein. (Original magnification:  $\times 200$ )

Predicted cell location: Cytoplasm

Positive control: Human thyroid cancer

Recommended dilution: 25-100



The image on the left is immunohistochemistry of paraffin-embedded Human thyroid cancer tissue using ml121490(ACY3 Antibody) at dilution 1/25, on the right is treated with fusion protein. (Original magnification:  $\times 200$ )

### Western blotting

Predicted band size: 35 kDa

Positive control: Mouse kidney tissue

Recommended dilution: 500-2000

Gel: 10% SDS-PAGE

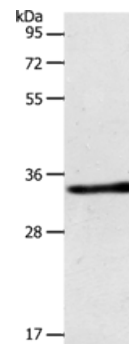
Lysate: 40  $\mu$ g

Lane: Mouse kidney tissue

Primary antibody: ml121490(ACY3 Antibody) at dilution 1/500

Secondary antibody: Goat anti rabbit IgG at 1/8000 dilution

Exposure time: 5 seconds



### ELISA

Recommended dilution: 2000-5000

联系电话: 4008-898-798, 021-61725725

联系QQ: 2881505695, 2881505696

邮箱: [mlbio\\_cn@yeah.net](mailto:mlbio_cn@yeah.net)

网址: [www.mlbio.cn](http://www.mlbio.cn)