

## Anti-ANGPTL4 antibody

<b>Cat. No.</b>	ml120213
<b>Package</b>	25 µl/100 µl/200 µl
<b>Storage</b>	-20°C, pH7.4 PBS, 0.05% NaN <sub>3</sub> , 40% Glycerol

### Product overview

<b>Description</b>	Anti-ANGPTL4 rabbit polyclonal antibody
<b>Applications</b>	ELISA, IHC
<b>Immunogen</b>	Fusion protein of human ANGPTL4
<b>Reactivity</b>	Human
<b>Content</b>	0.4 mg/ml
<b>Host species</b>	Rabbit
<b>Ig class</b>	Immunogen-specific rabbit IgG
<b>Purification</b>	Antigen affinity purification

### Target information

<b>Symbol</b>	ANGPTL4
<b>Full name</b>	Angiopoietin-related protein 4
<b>Synonyms</b>	NL2, ARP4, FIAF, PGAR, HFARP, pp1158, ANGPTL2
<b>Swissprot</b>	Q9BY76

### Target Background

This gene is a member of the angiopoietin/angiopoietin-like gene family and encodes a glycosylated, secreted protein with a fibrinogen C-terminal domain. This gene is induced under hypoxic conditions in endothelial cells and is the target of peroxisome proliferation activators. The encoded protein is a serum hormone directly involved in regulating glucose homeostasis, lipid metabolism, and insulin sensitivity and also acts as an apoptosis survival factor for vascular endothelial cells. The encoded protein may play a role in several cancers and it also has been shown to prevent the metastatic process by inhibiting vascular activity as well as tumor cell motility and invasiveness. Decreased expression of this protein has been associated with type 2 diabetes. Alternatively spliced transcript variants encoding different isoforms have been described. This gene was previously referred to as ANGPTL2 but has been renamed ANGPTL4.

订购热线: 4008-898-798

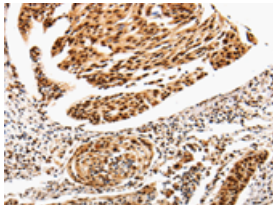
## Applications

### Immunohistochemistry

Predicted cell location: Cytoplasm, Nucleus

Positive control: Human cervical cancer

Recommended dilution: 25-100

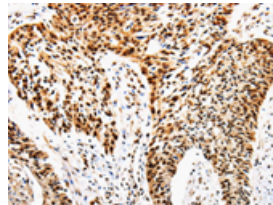


The image is immunohistochemistry of paraffin-embedded Human cervical cancer tissue using ml120213(ANGPTL4 Antibody) at dilution 1/25. (Original magnification: ×200)

Predicted cell location: Cytoplasm, Nucleus

Positive control: Human esophagus cancer

Recommended dilution: 25-100



The image is immunohistochemistry of paraffin-embedded Human esophagus cancer tissue using ml120213(ANGPTL4 Antibody) at dilution 1/25. (Original magnification: ×200)

### ELISA

Recommended dilution: 2000-5000

联系电话: 4008-898-798, 021-61725725

联系QQ: 2881505695, 2881505696

邮箱: [mlbio\\_cn@yeah.net](mailto:mlbio_cn@yeah.net)

网址: [www.mlbio.cn](http://www.mlbio.cn)