

Anti-AFAP1 antibody

Cat. No.	ml121531
Package	25 µl/100 µl/200 µl
Storage	-20°C, pH7.4 PBS, 0.05% NaN ₃ , 40% Glycerol

Product overview

Description	Anti-AFAP1 rabbit polyclonal antibody
Applications	ELISA, WB, IHC
Immunogen	Fusion protein of human AFAP1
Reactivity	Human, Mouse, Rat
Content	0.1 mg/ml
Host species	Rabbit
Ig class	Immunogen-specific rabbit IgG
Purification	Antigen affinity purification

Target information

Symbol	AFAP1
Full name	Actin filament associated protein 1
Synonyms	AFAP; AFAP110; AFAP-110
Swissprot	Q8N556

Target Background

The protein encoded by this gene is a Src binding partner. It may represent a potential modulator of actin filament integrity in response to cellular signals, and may function as an adaptor protein by linking Src family members and/or other signaling proteins to actin filaments. Multiple transcript variants encoding different isoforms have been found for this gene.

订购热线: 4008-898-798

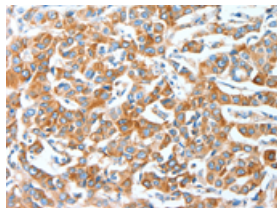
Applications

Immunohistochemistry

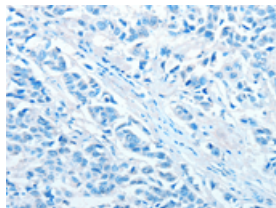
Predicted cell location: Cytoplasm

Positive control: Human breast cancer

Recommended dilution: 25-100



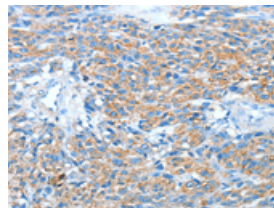
The image on the left is immunohistochemistry of paraffin-embedded Human breast cancer tissue using ml121531(AFAP1 Antibody) at dilution 1/20, on the right is treated with fusion protein. (Original magnification: $\times 200$)



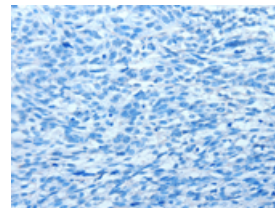
Predicted cell location: Cytoplasm

Positive control: Human esophagus cancer

Recommended dilution: 25-100



The image on the left is immunohistochemistry of paraffin-embedded Human esophagus cancer tissue using ml121531(AFAP1 Antibody) at dilution 1/20, on the right is treated with fusion protein. (Original magnification: $\times 200$)



Western blotting

Predicted band size: 81 kDa

Positive control: A172 cells

Recommended dilution: 200-1000

Gel: 8%SDS-PAGE

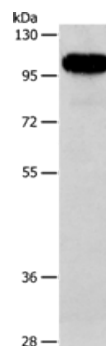
Lysate: 40 μ g

Lane: A172 cells

Primary antibody: ml121531(AFAP1 Antibody) at dilution 1/134

Secondary antibody: Goat anti rabbit IgG at 1/8000 dilution

Exposure time: 10 seconds



ELISA

Recommended dilution: 1000-2000

联系电话: 4008-898-798, 021-61725725

联系QQ: 2881505695, 2881505696

邮箱: mlbio_cn@yeah.net

网址: www.mlbio.cn