

## Anti-KRT8 antibody

<b>Cat. No.</b>	ml120230
<b>Package</b>	25 µl/100 µl/200 µl
<b>Storage</b>	-20°C, pH7.4 PBS, 0.05% NaN <sub>3</sub> , 40% Glycerol

### Product overview

<b>Description</b>	Anti-KRT8 rabbit polyclonal antibody
<b>Applications</b>	ELISA, IHC
<b>Immunogen</b>	Fusion protein of human KRT8
<b>Reactivity</b>	Human, Mouse, Rat
<b>Content</b>	0.4 mg/ml
<b>Host species</b>	Rabbit
<b>Ig class</b>	Immunogen-specific rabbit IgG
<b>Purification</b>	Antigen affinity purification

### Target information

<b>Symbol</b>	KRT8
<b>Full name</b>	keratin 8
<b>Synonyms</b>	K8; KO; CK8; CK-8; CYK8; K2C8; CARD2
<b>Swissprot</b>	P05787

### Target Background

This gene is a member of the type II keratin family clustered on the long arm of chromosome 12. Type I and type II keratins heteropolymerize to form intermediate-sized filaments in the cytoplasm of epithelial cells. The product of this gene typically dimerizes with keratin 18 to form an intermediate filament in simple single-layered epithelial cells. This protein plays a role in maintaining cellular structural integrity and also functions in signal transduction and cellular differentiation. Mutations in this gene cause cryptogenic cirrhosis. Alternatively spliced transcript variants have been found for this gene.

订购热线: 4008-898-798

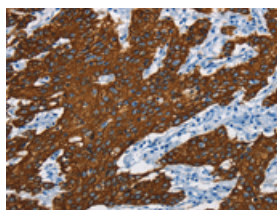
## Applications

### Immunohistochemistry

Predicted cell location: Cell membrane and Cytoplasm

Positive control: Human gasrtic cancer

Recommended dilution: 25-100

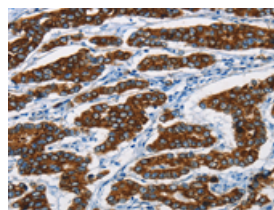


The image is immunohistochemistry of paraffin-embedded Human gastric cancer tissue using ml120230(KRT8 Antibody) at dilution 1/20. (Original magnification: ×200)

Predicted cell location: Cell membrane and Cytoplasm

Positive control: Human breast cancer

Recommended dilution: 25-100



The image is immunohistochemistry of paraffin-embedded Human breast cancer tissue using ml120230(KRT8 Antibody) at dilution 1/20. (Original magnification: ×200)

### ELISA

Recommended dilution: 1000-2000

联系电话: 4008-898-798, 021-61725725

联系QQ: 2881505695, 2881505696

邮箱: [mlbio\\_cn@yeah.net](mailto:mlbio_cn@yeah.net)

网址: [www.mlbio.cn](http://www.mlbio.cn)