

## Anti-ALDH8A1 antibody

<b>Cat. No.</b>	ml121571
<b>Package</b>	25 µl/100 µl/200 µl
<b>Storage</b>	-20°C, pH7.4 PBS, 0.05% NaN <sub>3</sub> , 40% Glycerol

### Product overview

<b>Description</b>	Anti-ALDH8A1 rabbit polyclonal antibody
<b>Applications</b>	ELISA, WB, IHC
<b>Immunogen</b>	Fusion protein of human ALDH8A1
<b>Reactivity</b>	Human, Mouse
<b>Content</b>	0.2 mg/ml
<b>Host species</b>	Rabbit
<b>Ig class</b>	Immunogen-specific rabbit IgG
<b>Purification</b>	Antigen affinity purification

### Target information

<b>Symbol</b>	ALDH8A1
<b>Full name</b>	aldehyde dehydrogenase 8 family, member A1
<b>Synonyms</b>	ALDH12; DJ352A20.2
<b>Swissprot</b>	Q9H2A2

### Target Background

This protein belongs to the aldehyde dehydrogenases family of proteins. It plays a role in a pathway of 9-cis-retinoic acid biosynthesis in vivo. This enzyme converts 9-cis-retinal into the retinoid X receptor ligand 9-cis-retinoic acid, and has approximately 40-fold higher activity with 9-cis-retinal than with all-trans-retinal. Therefore, it is the first known aldehyde dehydrogenase to show a preference for 9-cis-retinal relative to all-trans-retinal. Three transcript variants encoding distinct protein isoforms have been identified for this gene.

订购热线: 4008-898-798

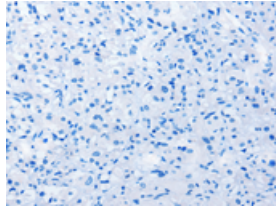
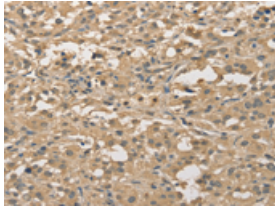
## Applications

### Immunohistochemistry

Predicted cell location: Cytoplasm

Positive control: Human thyroid cancer

Recommended dilution: 25-100

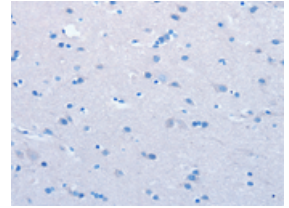
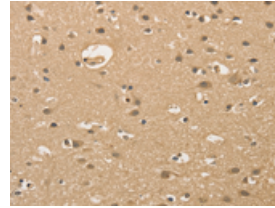


The image on the left is immunohistochemistry of paraffin-embedded Human thyroid cancer tissue using ml121571(ALDH8A1 Antibody) at dilution 1/30, on the right is treated with fusion protein. (Original magnification:  $\times 200$ )

Predicted cell location: Cytoplasm

Positive control: Human brain

Recommended dilution: 25-100



The image on the left is immunohistochemistry of paraffin-embedded Human brain tissue using ml121571(ALDH8A1 Antibody) at dilution 1/30, on the right is treated with fusion protein. (Original magnification:  $\times 200$ )

### Western blotting

Predicted band size: 53 kDa

Positive control: Mouse liver and kidney tissue

Recommended dilution: 500-2000

Gel: 8%SDS-PAGE

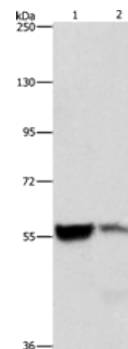
Lysate: 40  $\mu$ g

Lane 1-2: Mouse liver tissue, Mouse kidney tissue

Primary antibody: ml121571(ALDH8A1 Antibody) at dilution 1/550

Secondary antibody: Goat anti rabbit IgG at 1/8000 dilution

Exposure time: 3 seconds



### ELISA

Recommended dilution: 2000-5000

联系电话: 4008-898-798, 021-61725725

联系QQ: 2881505695, 2881505696

邮箱: [mlbio\\_cn@yeah.net](mailto:mlbio_cn@yeah.net)

网址: [www.mlbio.cn](http://www.mlbio.cn)