

Anti-ARL6 antibody

Cat. No.	ml120260
Package	25 µl/100 µl/200 µl
Storage	-20°C, pH7.4 PBS, 0.05% NaN ₃ , 40% Glycerol

Product overview

Description	Anti-ARL6 rabbit polyclonal antibody
Applications	ELISA, IHC
Immunogen	Fusion protein of human ARL6
Reactivity	Human, Mouse
Content	0.7 mg/ml
Host species	Rabbit
Ig class	Immunogen-specific rabbit IgG
Purification	Antigen affinity purification

Target information

Symbol	ARL6
Full name	ADP-ribosylation factor-like protein 6
Synonyms	BBS3, RP55
Swissprot	Q9H0F7

Target Background

The protein encoded by this gene belongs to the ARF family of GTP-binding proteins. ARF proteins are important regulators of cellular traffic and are the founding members of an expanding family of homologous proteins and genomic sequences. They depart from other small GTP-binding proteins by a unique structural device that implements front-back communication from the N-terminus to the nucleotide-binding site. Studies of the mouse ortholog of this protein suggest an involvement in protein transport, membrane trafficking, or cell signaling during hematopoietic maturation. Alternative splicing occurs at this locus and two transcript variants encoding the same protein have been described.

订购热线: 4008-898-798

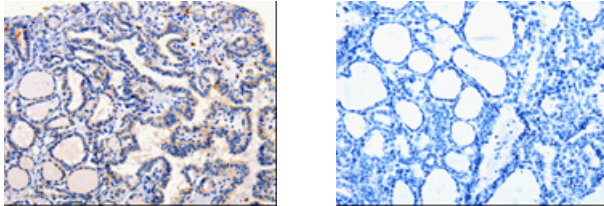
Applications

Immunohistochemistry

Predicted cell location: Cytoplasm

Positive control: Human thyroid cancer

Recommended dilution: 25-100



The image on the left is immunohistochemistry of paraffin-embedded Human thyroid cancer tissue using ml120260(ARL6 Antibody) at dilution 1/25, on the right is treated with fusion protein. (Original magnification: $\times 200$)

ELISA

Recommended dilution: 1000-5000

联系电话: 4008-898-798, 021-61725725

联系QQ: 2881505695, 2881505696

邮箱: mlbio_cn@yeah.net

网址: www.mlbio.cn