

Anti-SAR1B antibody

Cat. No.	ml120261
Package	25 µl/100 µl/200 µl
Storage	-20°C, pH7.4 PBS, 0.05% NaN ₃ , 40% Glycerol

Product overview

Description	Anti-SAR1B rabbit polyclonal antibody
Applications	ELISA, IHC
Immunogen	Fusion protein of human SAR1B
Reactivity	Human, Mouse, Rat
Content	0.1 mg/ml
Host species	Rabbit
Ig class	Immunogen-specific rabbit IgG
Purification	Antigen affinity purification

Target information

Symbol	SAR1B
Full name	secretion associated, Ras related GTPase 1B
Synonyms	ANDD; CMRD; GTBPB; SARA2
Swissprot	Q9Y6B6

Target Background

The protein encoded by this gene is a small GTPase that acts as a homodimer. The encoded protein is activated by the guanine nucleotide exchange factor PREB and is involved in protein transport from the endoplasmic reticulum to the Golgi. This protein is part of the COPII coat complex. Defects in this gene are a cause of chylomicron retention disease (CMRD), also known as Anderson disease (ANDD). Two transcript variants encoding the same protein have been found for this gene.

订购热线: 4008-898-798

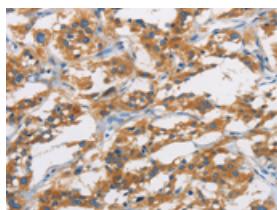
Applications

Immunohistochemistry

Predicted cell location: Cytoplasm

Positive control: Human thyroid cancer

Recommended dilution: 25-100

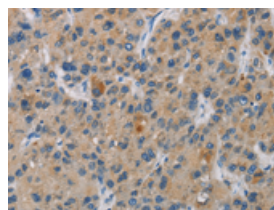


The image is immunohistochemistry of paraffin-embedded Human thyroid cancer tissue using ml120261(SAR1B Antibody) at dilution 1/20. (Original magnification: ×200)

Predicted cell location: Cytoplasm

Positive control: Human liver cancer

Recommended dilution: 25-100



The image is immunohistochemistry of paraffin-embedded Human liver cancer tissue using ml120261(SAR1B Antibody) at dilution 1/20. (Original magnification: ×200)

ELISA

Recommended dilution: 1000-2000

联系电话: 4008-898-798, 021-61725725

联系QQ: 2881505695, 2881505696

邮箱: mlbio_cn@yeah.net

网址: www.mlbio.cn