

Anti-AMDHD2 antibody

Cat. No.	ml121604
Package	25 µl/100 µl/200 µl
Storage	-20°C, pH7.4 PBS, 0.05% NaN ₃ , 40% Glycerol

Product overview

Description	Anti-AMDHD2 rabbit polyclonal antibody
Applications	ELISA, WB, IHC
Immunogen	Fusion protein of human AMDHD2
Reactivity	Human, Mouse
Content	0.3 mg/ml
Host species	Rabbit
Ig class	Immunogen-specific rabbit IgG
Purification	Antigen affinity purification

Target information

Symbol	AMDHD2
Full name	amidohydrolase domain containing 2
Synonyms	CGI-14
Swissprot	Q9Y303

Target Background

AMDHD2 (amidohydrolase domain containing 2), also known as putative N-acetylglucosamine-6-phosphate deacetylase or GlcNAc 6-P deacetylase, is a 409 amino acid protein belonging to the NAGA family. AMDHD2 participates in N-acetylglucosamine-6-phosphate deacetylase and in hydrolase activities, acting on carbon-nitrogen bonds, but not peptide bonds.

订购热线: 4008-898-798

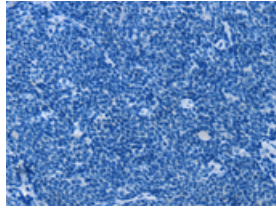
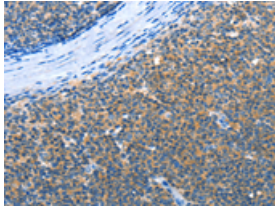
Applications

Immunohistochemistry

Predicted cell location: Cytoplasm

Positive control: Human lymphoma cancer

Recommended dilution: 25-100

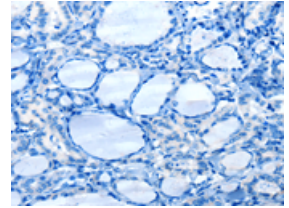
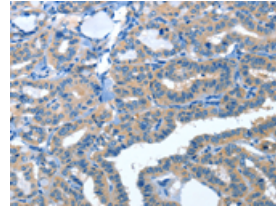


The image on the left is immunohistochemistry of paraffin-embedded Human lymphoma cancer tissue using ml121604(AMDHD2 Antibody) at dilution 1/30, on the right is treated with fusion protein. (Original magnification: $\times 200$)

Predicted cell location: Cytoplasm

Positive control: Human thyroid cancer

Recommended dilution: 25-100



The image on the left is immunohistochemistry of paraffin-embedded Human thyroid cancer tissue using ml121604(AMDHD2 Antibody) at dilution 1/30, on the right is treated with fusion protein. (Original magnification: $\times 200$)

Western blotting

Predicted band size: 44 kDa

Positive control: Mouse adrenal gland tissue

Recommended dilution: 200-1000

Gel: 8%SDS-PAGE

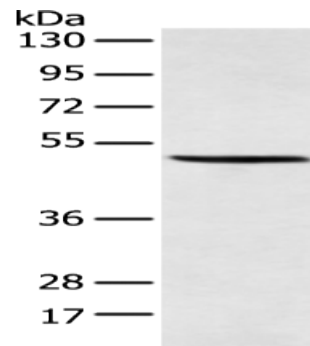
Lysate: 40 μ g

Lane: Mouse adrenal gland tissue

Primary antibody: ml121604(AMDHD2 Antibody) at dilution 1/250

Secondary antibody: Goat anti rabbit IgG at 1/8000 dilution

Exposure time: 20 seconds



ELISA

Recommended dilution: 1000-2000

联系电话: 4008-898-798, 021-61725725

联系QQ: 2881505695, 2881505696

邮箱: mlbio_cn@yeah.net

网址: www.mlbio.cn