

## Anti-ARL4A antibody

|                 |   |
|-----------------|---|
| <b>Cat. No.</b> | ml121698  |
| <b>Package</b>  | 25 µl/100 µl/200 µl                                     |
| <b>Storage</b>  | -20°C, pH7.4 PBS, 0.05% NaN <sub>3</sub> , 40% Glycerol |

### Product overview

|                     |                                       |
|---------------------|---------------------------------------|
| <b>Description</b>  | Anti-ARL4A rabbit polyclonal antibody |
| <b>Applications</b> | ELISA, WB, IHC                        |
| <b>Immunogen</b>    | Fusion protein of human ARL4A         |
| <b>Reactivity</b>   | Human, Mouse, Rat                     |
| <b>Content</b>      | 0.5 mg/ml                             |
| <b>Host species</b> | Rabbit                                |
| <b>Ig class</b>     | Immunogen-specific rabbit IgG         |
| <b>Purification</b> | Antigen affinity purification         |

### Target information

|                  |                                 |
|------------------|---------------------------------|
| <b>Symbol</b>    | ARL4A                           |
| <b>Full name</b> | ADP-ribosylation factor-like 4A |
| <b>Synonyms</b>  | ARL4                            |
| <b>Swissprot</b> | P40617                          |

### Target Background

ADP-ribosylation factor-like 4A is a member of the ADP-ribosylation factor family of GTP-binding proteins. ARL4A is similar to ARL4C and ARL4D and each has a nuclear localization signal and an unusually high guanine nucleotide exchange rate. ARL4A is located in both the nuclear and extranuclear cell compartments. Multiple transcript variants encoding the same protein have been found for this gene

订购热线: 4008-898-798

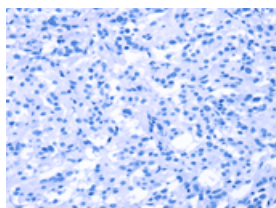
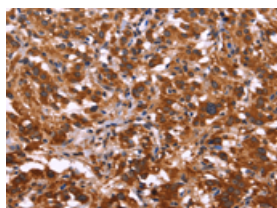
## Applications

### Immunohistochemistry

Predicted cell location: Cytoplasm

Positive control: Human thyroid cancer

Recommended dilution: 50-200

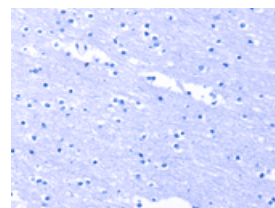
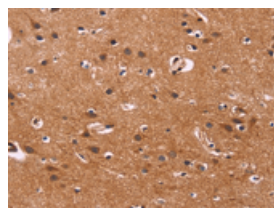


The image on the left is immunohistochemistry of paraffin-embedded Human thyroid cancer tissue using ml121698(ARL4A Antibody) at dilution 1/50, on the right is treated with fusion protein. (Original magnification:  $\times 200$ )

Predicted cell location: Cytoplasm

Positive control: Human brain

Recommended dilution: 50-200



The image on the left is immunohistochemistry of paraffin-embedded Human brain tissue using ml121698(ARL4A Antibody) at dilution 1/50, on the right is treated with fusion protein. (Original magnification:  $\times 200$ )

### Western blotting

Predicted band size: 23 kDa

Positive control: Human fetal liver tissue

Recommended dilution: 200-1000

Gel: 10% SDS-PAGE

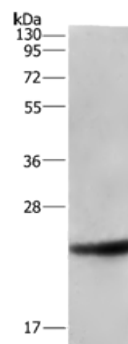
Lysate: 40  $\mu$ g

Lane: Human fetal liver tissue

Primary antibody: ml121698(ARL4A Antibody) at dilution 1/533

Secondary antibody: Goat anti rabbit IgG at 1/8000 dilution

Exposure time: 30 seconds



### ELISA

Recommended dilution: 1000-2000

联系电话: 4008-898-798, 021-61725725

联系QQ: 2881505695, 2881505696

邮箱: [mlbio\\_cn@yeah.net](mailto:mlbio_cn@yeah.net)

网址: [www.mlbio.cn](http://www.mlbio.cn)