

Anti-CDCA8 antibody

Cat. No.	ml121747
Package	25 µl/100 µl/200 µl
Storage	-20°C, pH7.4 PBS, 0.05% NaN ₃ , 40% Glycerol

Product overview

Description	Anti-CDCA8 rabbit polyclonal antibody
Applications	ELISA, WB, IHC
Immunogen	Fusion protein of human CDCA8
Reactivity	Human
Content	0.5 mg/ml
Host species	Rabbit
Ig class	Immunogen-specific rabbit IgG
Purification	Antigen affinity purification

Target information

Symbol	CDCA8
Full name	cell division cycle associated 8
Synonyms	BOR; DasraB; MESRGP; BOREALIN
Swissprot	Q53HL2

Target Background

This gene encodes a component of the chromosomal passenger complex. This complex is an essential regulator of mitosis and cell division. This protein is cell-cycle regulated and is required for chromatin-induced microtubule stabilization and spindle formation. Alternate splicing results in multiple transcript variants. Pseudogenes of this gene are found on chromosomes 7, 8 and 16.

订购热线: 4008-898-798

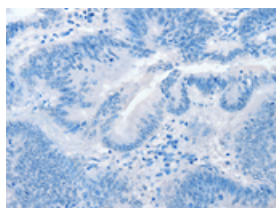
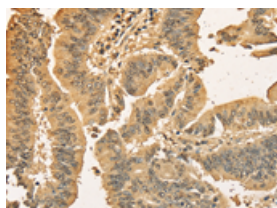
Applications

Immunohistochemistry

Predicted cell location: Nucleus

Positive control: Human colon cancer

Recommended dilution: 50-200

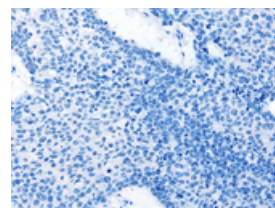
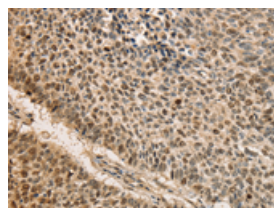


The image on the left is immunohistochemistry of paraffin-embedded Human colon cancer tissue using ml121747(CDCA8 Antibody) at dilution 1/40, on the right is treated with fusion protein. (Original magnification: $\times 200$)

Predicted cell location: Nucleus

Positive control: Human lung cancer

Recommended dilution: 50-200



The image on the left is immunohistochemistry of paraffin-embedded Human lung cancer tissue using ml121747(CDCA8 Antibody) at dilution 1/40, on the right is treated with fusion protein. (Original magnification: $\times 200$)

Western blotting

Predicted band size: 31 kDa

Positive control: 293T cells

Recommended dilution: 1000-5000

Gel: 15% SDS-PAGE

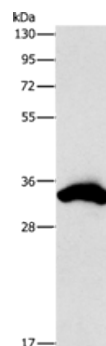
Lysate: 40 μ g

Lane: 293T cells

Primary antibody: ml121747(CDCA8 Antibody) at dilution 1/900

Secondary antibody: Goat anti rabbit IgG at 1/8000 dilution

Exposure time: 1 second



ELISA

Recommended dilution: 2000-10000

联系电话: 4008-898-798, 021-61725725

联系QQ: 2881505695, 2881505696

邮箱: mlbio_cn@yeah.net

网址: www.mlbio.cn