

Anti-SIGMAR1 antibody

Cat. No.	ml121774
Package	25 µl/100 µl/200 µl
Storage	-20°C, pH7.4 PBS, 0.05% NaN ₃ , 40% Glycerol

Product overview

Description	Anti-SIGMAR1 rabbit polyclonal antibody
Applications	ELISA, WB, IHC
Immunogen	Fusion protein of human SIGMAR1
Reactivity	Human, Mouse, Rat
Content	0.4 mg/ml
Host species	Rabbit
Ig class	Immunogen-specific rabbit IgG
Purification	Antigen affinity purification

Target information

Symbol	SIGMAR1
Full name	sigma non-opioid intracellular receptor 1
Synonyms	SRBP; ALS16; OPRS1; SR-BP; SIG-1R; SR-BP1; sigma1R
Swissprot	Q99720

Target Background

This gene encodes a receptor protein that interacts with a variety of psychotomimetic drugs, including cocaine and amphetamines. The receptor is believed to play an important role in the cellular functions of various tissues associated with the endocrine, immune, and nervous systems. As indicated by its previous name, opioid receptor sigma 1 (OPRS1), the product of this gene was erroneously thought to function as an opioid receptor; it is now thought to be a non-opioid receptor. Mutations in this gene has been associated with juvenile amyotrophic lateral sclerosis 16. Alternative splicing of this gene results in transcript variants encoding distinct isoforms.

订购热线: 4008-898-798

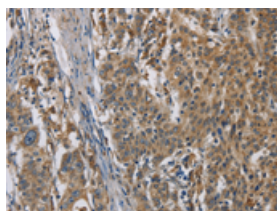
Applications

Immunohistochemistry

Predicted cell location: Cytoplasm

Positive control: Human gastric cancer

Recommended dilution: 100-300

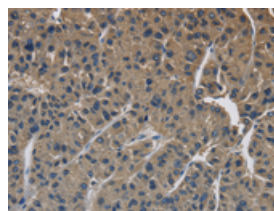


The image is immunohistochemistry of paraffin-embedded Human gastric cancer tissue using ml121774(SIGMAR1 Antibody) at dilution 1/50. (Original magnification: ×200)

Predicted cell location: Cytoplasm

Positive control: Human liver cancer

Recommended dilution: 100-300



The image is immunohistochemistry of paraffin-embedded Human liver cancer tissue using ml121774(SIGMAR1 Antibody) at dilution 1/50. (Original magnification: ×200)

Western blotting

Predicted band size: 25 kDa

Positive control: Mouse liver and brain tissue, 293T, A549, A431 and PC3 cells

Recommended dilution: 500-2000

Gel: 10%SDS-PAGE

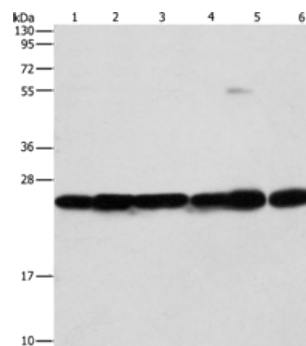
Lysate: 40 µg

Lane 1-6: Mouse liver tissue, Mouse brain tissue, 293T cells, A549 cells, A431 cells, PC3 cells

Primary antibody: ml121774(SIGMAR1 Antibody) at dilution 1/310

Secondary antibody: Goat anti rabbit IgG at 1/8000 dilution

Exposure time: 1 second



ELISA

Recommended dilution: 2000-5000

联系电话: 4008-898-798, 021-61725725

联系QQ: 2881505695, 2881505696

邮箱: mlbio_cn@yeah.net

网址: www.mlbio.cn