

Anti-MARK1 antibody

Cat. No.	ml121802
Package	25 µl/100 µl/200 µl
Storage	-20°C, pH7.4 PBS, 0.05% NaN ₃ , 40% Glycerol

Product overview

Description	Anti-MARK1 rabbit polyclonal antibody
Applications	ELISA, WB, IHC
Immunogen	Fusion protein of human MARK1
Reactivity	Human, Mouse, Rat
Content	0.2 mg/ml
Host species	Rabbit
Ig class	Immunogen-specific rabbit IgG
Purification	Antigen affinity purification

Target information

Symbol	MARK1
Full name	MAP/microtubule affinity-regulating kinase 1
Synonyms	MARK; Par1c; Par-1c
Swissprot	Q9P0L2

Target Background

MAP/microtubule affinity-regulating kinase 1 (MARK1) is a 795 amino acid protein belonging to the CAMK Ser/Thr protein kinase family. MARK1 is thought to play a role in the stability of the microtubule matrix of the cytoskeleton. MARK1 is activated by phosphorylation of Thr215 by LKB1 in complex with STRAD and MO25. Localized to the cytoskeleton, MARK1 contains one kinase-associated (KA1) domain, one protein kinase domain and one UBA domain. Expressed as three isoforms produced by alternative splicing, MARK1 is found with highest levels in brain, skeletal muscle and heart.

订购热线: 4008-898-798

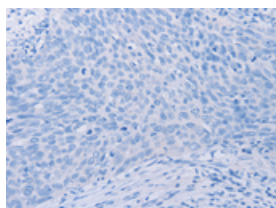
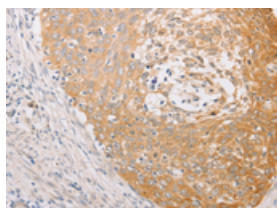
Applications

Immunohistochemistry

Predicted cell location: Cytoplasm

Positive control: Human cervical cancer

Recommended dilution: 25-100

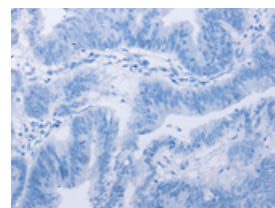
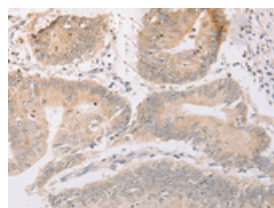


The image on the left is immunohistochemistry of paraffin-embedded Human cervical cancer tissue using ml121802(MARK1 Antibody) at dilution 1/30, on the right is treated with fusion protein. (Original magnification: $\times 200$)

Predicted cell location: Cytoplasm

Positive control: Human colon cancer

Recommended dilution: 25-100



The image on the left is immunohistochemistry of paraffin-embedded Human colon cancer tissue using ml121802(MARK1 Antibody) at dilution 1/30, on the right is treated with fusion protein. (Original magnification: $\times 200$)

Western blotting

Predicted band size: 89 kDa

Positive control: Mouse brain tissue

Recommended dilution: 200-1000

Gel: 6%SDS-PAGE

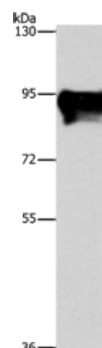
Lysate: 40 μ g

Lane: Mouse brain tissue

Primary antibody: ml121802(MARK1 Antibody) at dilution 1/300

Secondary antibody: Goat anti rabbit IgG at 1/8000 dilution

Exposure time: 30 seconds



ELISA

Recommended dilution: 2000-5000

联系电话: 4008-898-798, 021-61725725

联系QQ: 2881505695, 2881505696

邮箱: mlbio_cn@yeah.net

网址: www.mlbio.cn