

Anti-BTG4 antibody

Cat. No.	ml120324
Package	25 µl/100 µl/200 µl
Storage	-20°C, pH7.4 PBS, 0.05% NaN ₃ , 40% Glycerol

Product overview

Description	Anti-BTG4 rabbit polyclonal antibody
Applications	ELISA, IHC
Immunogen	Fusion protein of human BTG4
Reactivity	Human
Content	0.6 mg/ml
Host species	Rabbit
Ig class	Immunogen-specific rabbit IgG
Purification	Antigen affinity purification

Target information

Symbol	BTG4
Full name	BTG family member 4
Synonyms	PC3B
Swissprot	Q9NY30

Target Background

The protein encoded by this gene is a member of the BTG/Tob family. This family has structurally related proteins that appear to have antiproliferative properties. This encoded protein can induce G1 arrest in the cell cycle.

订购热线: 4008-898-798

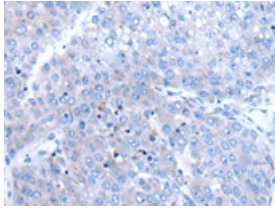
Applications

Immunohistochemistry

Predicted cell location: Cytoplasm

Positive control: Human liver cancer

Recommended dilution: 40-250



The image is immunohistochemistry of paraffin-embedded Human liver cancer tissue using ml120324(BTG4 Antibody) at dilution 1/65.
(Original magnification: ×200)

ELISA

Recommended dilution: 5000-10000

联系电话: 4008-898-798, 021-61725725

联系QQ: 2881505695, 2881505696

邮箱: mlbio_cn@yeah.net

网址: www.mlbio.cn