

Anti-CAPN3 antibody

Cat. No.	ml120331
Package	25 µl/100 µl/200 µl
Storage	-20°C, pH7.4 PBS, 0.05% NaN ₃ , 40% Glycerol

Product overview

Description	Anti-CAPN3 rabbit polyclonal antibody
Applications	ELISA, IHC
Immunogen	Fusion protein of human CAPN3
Reactivity	Human, Mouse, Rat
Content	1.4 mg/ml
Host species	Rabbit
Ig class	Immunogen-specific rabbit IgG
Purification	Antigen affinity purification

Target information

Symbol	CAPN3
Full name	calpain 3
Synonyms	p94; CANP3; LGMD2; nCL-1; CANPL3; LGMD2A
Swissprot	P20807

Target Background

Calpain, a heterodimer consisting of a large and a small subunit, is a major intracellular protease, although its function has not been well established. This gene encodes a muscle-specific member of the calpain large subunit family that specifically binds to titin. Mutations in this gene are associated with limb-girdle muscular dystrophies type 2A. Alternate promoters and alternative splicing result in multiple transcript variants encoding different isoforms and some variants are ubiquitously expressed.

订购热线: 4008-898-798

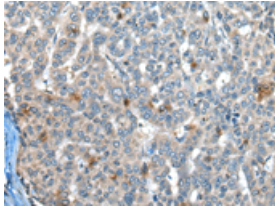
Applications

Immunohistochemistry

Predicted cell location: Cytoplasm

Positive control: Human liver cancer

Recommended dilution: 30-150



The image is immunohistochemistry of paraffin-embedded Human liver cancer tissue using ml120331(CAPN3 Antibody) at dilution 1/30.
(Original magnification: ×200)

ELISA

Recommended dilution: 5000-10000

联系电话: 4008-898-798, 021-61725725

联系QQ: 2881505695, 2881505696

邮箱: mlbio_cn@yeah.net

网址: www.mlbio.cn