

Anti-STK40 antibody

Cat. No.	ml121826
Package	25 µl/100 µl/200 µl
Storage	-20°C, pH7.4 PBS, 0.05% NaN ₃ , 40% Glycerol

Product overview

Description	Anti-STK40 rabbit polyclonal antibody
Applications	ELISA, WB, IHC
Immunogen	Fusion protein of human STK40
Reactivity	Human, Mouse, Rat
Content	0.2 mg/ml
Host species	Rabbit
Ig class	Immunogen-specific rabbit IgG
Purification	Antigen affinity purification

Target information

Symbol	STK40
Full name	serine/threonine kinase 40
Synonyms	SHIK; SgK495
Swissprot	Q8N2I9

Target Background

STK40 (Serine/threonine-protein kinase 40), also known as Sugen kinase 495, is a 435 amino acid protein kinase that may be a negative regulator of NFκB and p53-mediated gene expression. Localized to both the cytoplasm and the nucleus, STK40 is ubiquitously expressed. STK40 has a central serine/threonine protein kinase domain and is homologous to TRB-3, a protein that regulates activation of MAP kinases and inhibits NFκB-mediated gene transcription.

订购热线: 4008-898-798

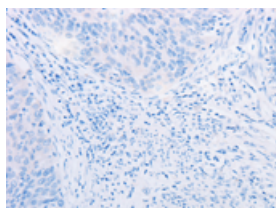
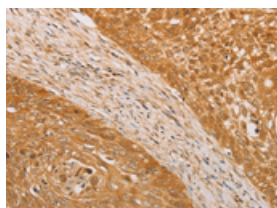
Applications

Immunohistochemistry

Predicted cell location: Cytoplasm and Nucleus

Positive control: Human cervical cancer

Recommended dilution: 50-200

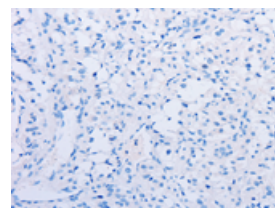
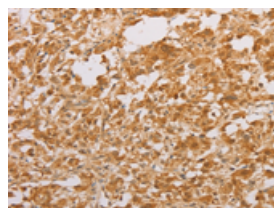


The image on the left is immunohistochemistry of paraffin-embedded Human cervical cancer tissue using ml121826(STK40 Antibody) at dilution 1/30, on the right is treated with fusion protein. (Original magnification: $\times 200$)

Predicted cell location: Cytoplasm and Nucleus

Positive control: Human thyroid cancer

Recommended dilution: 50-200



The image on the left is immunohistochemistry of paraffin-embedded Human thyroid cancer tissue using ml121826(STK40 Antibody) at dilution 1/30, on the right is treated with fusion protein. (Original magnification: $\times 200$)

Western blotting

Predicted band size: 49 kDa

Positive control: Human placenta tissue

Recommended dilution: 200-1000

Gel: 6%SDS-PAGE

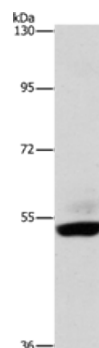
Lysate: 40 μ g

Lane: Human placenta tissue

Primary antibody: ml121826(STK40 Antibody) at dilution 1/400

Secondary antibody: Goat anti rabbit IgG at 1/8000 dilution

Exposure time: 2 minutes



ELISA

Recommended dilution: 1000-2000

联系电话: 4008-898-798, 021-61725725

联系QQ: 2881505695, 2881505696

邮箱: mlbio_cn@yeah.net

网址: www.mlbio.cn