

Anti-CDKN1B antibody

| | |
|-----------------|---|
| Cat. No. | ml120404 |
| Package | 25 µl/100 µl/200 µl |
| Storage | -20°C, pH7.4 PBS, 0.05% NaN ₃ , 40% Glycerol |

Product overview

| | |
|---------------------|--|
| Description | Anti-CDKN1B rabbit polyclonal antibody |
| Applications | ELISA, IHC |
| Immunogen | Fusion protein of human CDKN1B |
| Reactivity | Human, Mouse |
| Content | 1.32 mg/ml |
| Host species | Rabbit |
| Ig class | Immunogen-specific rabbit IgG |
| Purification | Antigen affinity purification |

Target information

| | |
|------------------|--------------------------------------|
| Symbol | CDKN1B |
| Full name | cyclin dependent kinase inhibitor 1B |
| Synonyms | KIP1; MEN4; CDKN4; MEN1B; P27KIP1 |
| Swissprot | P46527 |

Target Background

This gene encodes a cyclin-dependent kinase inhibitor, which shares a limited similarity with CDK inhibitor CDKN1A/p21. The encoded protein binds to and prevents the activation of cyclin E-CDK2 or cyclin D-CDK4 complexes, and thus controls the cell cycle progression at G1. The degradation of this protein, which is triggered by its CDK dependent phosphorylation and subsequent ubiquitination by SCF complexes, is required for the cellular transition from quiescence to the proliferative state. Mutations in this gene are associated with multiple endocrine neoplasia type IV (MEN4).

订购热线: 4008-898-798

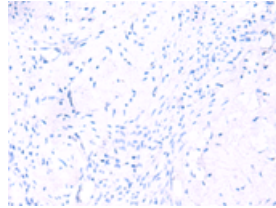
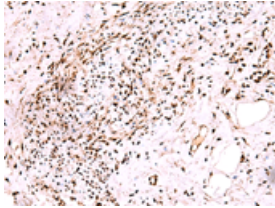
Applications

Immunohistochemistry

Predicted cell location: Nucleus

Positive control: Human cervical cancer

Recommended dilution: 50-300

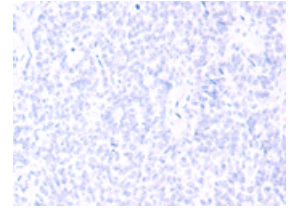
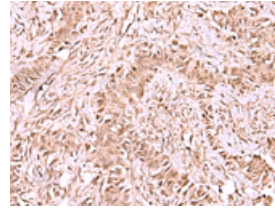


The image on the left is immunohistochemistry of paraffin-embedded Human cervical cancer tissue using ml120404(CDKN1B Antibody) at dilution 1/75, on the right is treated with fusion protein. (Original magnification: $\times 200$)

Predicted cell location: Nucleus

Positive control: Human ovarian cancer

Recommended dilution: 50-300



The image on the left is immunohistochemistry of paraffin-embedded Human ovarian cancer tissue using ml120404(CDKN1B Antibody) at dilution 1/75, on the right is treated with fusion protein. (Original magnification: $\times 200$)

ELISA

Recommended dilution: 5000-10000

联系电话: 4008-898-798, 021-61725725

联系QQ: 2881505695, 2881505696

邮箱: mlbio_cn@yeah.net

网址: www.mlbio.cn