

## Anti-CEACAM8 antibody

<b>Cat. No.</b>	ml120405
<b>Package</b>	25 µl/100 µl/200 µl
<b>Storage</b>	-20°C, pH7.4 PBS, 0.05% NaN <sub>3</sub> , 40% Glycerol

### Product overview

<b>Description</b>	Anti-CEACAM8 rabbit polyclonal antibody
<b>Applications</b>	ELISA, IHC
<b>Immunogen</b>	Fusion protein of human CEACAM8
<b>Reactivity</b>	Human
<b>Content</b>	0.3 mg/ml
<b>Host species</b>	Rabbit
<b>Ig class</b>	Immunogen-specific rabbit IgG
<b>Purification</b>	Antigen affinity purification

### Target information

<b>Symbol</b>	CEACAM8
<b>Full name</b>	carcinoembryonic antigen related cell adhesion molecule 8
<b>Synonyms</b>	CD67; CGM6; CD66b; NCA-95
<b>Swissprot</b>	P31997

### Target Background

CEA-related cell adhesion molecule 8 (CEACAM8) belongs to the carcinoembryonic antigen (CEA) gene family. It encodes a glycosylphosphatidylinositol (GPI)-linked glycoprotein with a molecular mass of 95kD and is expressed in cells of the granulocyte-lineage. It is expressed in neutrophils and eosinophils and is characterized as a granulocyte-specific activation antigen. Therefore CEACAM8 could serve as a marker for granulocyte activities. Like all members of the CEA family, it consists of a single N domain, with structural homology to the immunoglobulin variable domains, followed by two immunoglobulin constant-like A and B domains.

订购热线: 4008-898-798

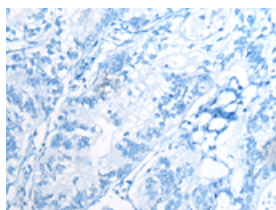
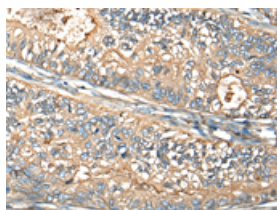
## Applications

### Immunohistochemistry

Predicted cell location: Cytoplasm and Cell membrane

Positive control: Human gastric cancer

Recommended dilution: 30-150

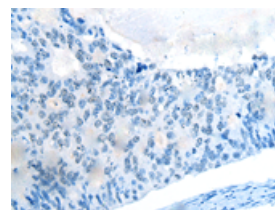
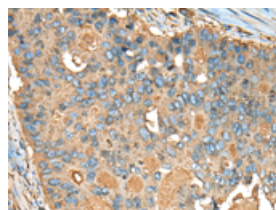


The image on the left is immunohistochemistry of paraffin-embedded Human gastric cancer tissue using ml120405(CEACAM8 Antibody) at dilution 1/30, on the right is treated with fusion protein. (Original magnification:  $\times 200$ )

Predicted cell location: Cytoplasm and Cell membrane

Positive control: Human colorectal cancer

Recommended dilution: 30-150



The image on the left is immunohistochemistry of paraffin-embedded Human colorectal cancer tissue using ml120405(CEACAM8 Antibody) at dilution 1/30, on the right is treated with fusion protein. (Original magnification:  $\times 200$ )

### ELISA

Recommended dilution: 5000-10000

联系电话: 4008-898-798, 021-61725725

联系QQ: 2881505695, 2881505696

邮箱: [mlbio\\_cn@yeah.net](mailto:mlbio_cn@yeah.net)

网址: [www.mlbio.cn](http://www.mlbio.cn)