

Anti-ASB8 antibody

Cat. No.	ml121912
Package	25 µl/100 µl/200 µl
Storage	-20°C, pH7.4 PBS, 0.05% NaN ₃ , 40% Glycerol

Product overview

Description	Anti-ASB8 rabbit polyclonal antibody
Applications	ELISA, WB, IHC
Immunogen	Fusion protein of human ASB8
Reactivity	Human, Mouse
Content	0.7 mg/ml
Host species	Rabbit
Ig class	Immunogen-specific rabbit IgG
Purification	Antigen affinity purification

Target information

Symbol	ASB8
Full name	ankyrin repeat and SOCS box containing 8
Synonyms	PP14212
Swissprot	Q9H765

Target Background

ASB-8 (ankyrin repeat and SOCS box-containing 8) is a 288 amino acid member of the ASB family that contains one SOCS box domain and four ANK repeats. Localized to the cytoplasm, ASB-8 functions as a substrate-recognition component of an E3 ubiquitin-protein ligase complex and, working in conjunction with other proteins, plays a role in the ubiquitination and subsequent proteasomal degradation of target proteins. The highest level of ASB-8 expression has been detected in skeletal muscle. ASB-8 is also expressed in heart, brain, placenta, liver, kidney and pancreas.

订购热线: 4008-898-798

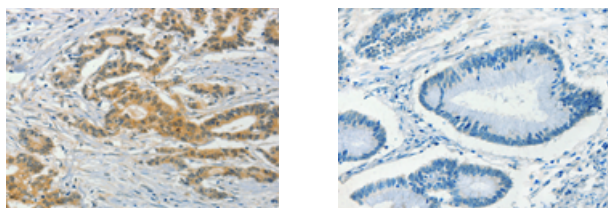
Applications

Immunohistochemistry

Predicted cell location: Cytoplasm

Positive control: Human colon cancer

Recommended dilution: 25-100



The image on the left is immunohistochemistry of paraffin-embedded Human colon cancer tissue using ml121912(ASB8 Antibody) at dilution 1/50, on the right is treated with fusion protein. (Original magnification: $\times 200$)

Western blotting

Predicted band size: 32 kDa

Positive control: K562 cell

Recommended dilution: 200-1000

Gel: 12% SDS-PAGE

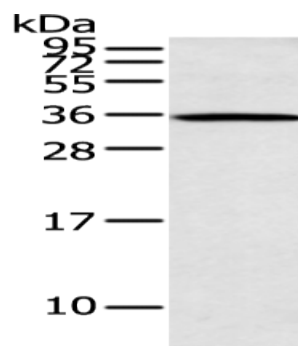
Lysate: 40 μ g

Lane: K562 cell

Primary antibody: ml121912(ASB8 Antibody) at dilution 1/200

Secondary antibody: Goat anti rabbit IgG at 1/8000 dilution

Exposure time: 30 seconds



ELISA

Recommended dilution: 1000-2000

联系电话: 4008-898-798, 021-61725725

联系QQ: 2881505695, 2881505696

邮箱: mlbio_cn@yeah.net

网址: www.mlbio.cn