

Anti-ADCY3 antibody

Cat. No.	ml121930
Package	25 µl/100 µl/200 µl
Storage	-20°C, pH7.4 PBS, 0.05% NaN ₃ , 40% Glycerol

Product overview

Description	Anti-ADCY3 rabbit polyclonal antibody
Applications	ELISA, WB, IHC
Immunogen	Fusion protein of human ADCY3
Reactivity	Human, Mouse, Rat
Content	0.5 mg/ml
Host species	Rabbit
Ig class	Immunogen-specific rabbit IgG
Purification	Antigen affinity purification

Target information

Symbol	ADCY3
Full name	adenylate cyclase 3
Synonyms	AC3
Swissprot	O60266

Target Background

This gene encodes adenylyl cyclase 3 which is a membrane-associated enzyme and catalyzes the formation of the secondary messenger cyclic adenosine monophosphate (cAMP). This protein appears to be widely expressed in various human tissues and may be involved in a number of physiological and pathophysiological metabolic processes.

订购热线: 4008-898-798

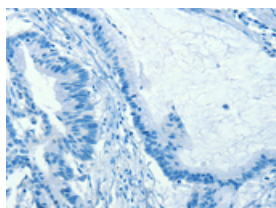
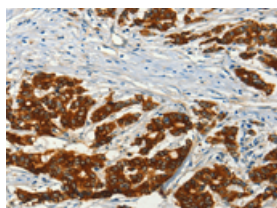
Applications

Immunohistochemistry

Predicted cell location: Cytoplasm

Positive control: Human colon cancer

Recommended dilution: 50-200

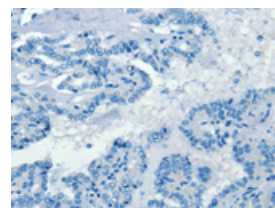
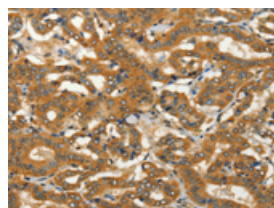


The image on the left is immunohistochemistry of paraffin-embedded Human colon cancer tissue using ml121930(ADCY3 Antibody) at dilution 1/50, on the right is treated with fusion protein. (Original magnification: $\times 200$)

Predicted cell location: Cytoplasm

Positive control: Human thyroid cancer

Recommended dilution: 50-200



The image on the left is immunohistochemistry of paraffin-embedded Human thyroid cancer tissue using ml121930(ADCY3 Antibody) at dilution 1/50, on the right is treated with fusion protein. (Original magnification: $\times 200$)

Western blotting

Predicted band size: 129 kDa

Positive control: Lovo cells and human fetal brain tissue

Recommended dilution: 200-1000

Gel: 6%SDS-PAGE

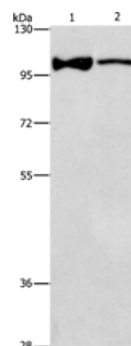
Lysate: 40 μ g

Lane 1-2: Lovo cells, human fetal brain tissue

Primary antibody: ml121930(ADCY3 Antibody) at dilution 1/312.5

Secondary antibody: Goat anti rabbit IgG at 1/8000 dilution

Exposure time: 5 minutes



ELISA

Recommended dilution: 1000-5000

联系电话: 4008-898-798, 021-61725725

联系QQ: 2881505695, 2881505696

邮箱: mlbio_cn@yeah.net

网址: www.mlbio.cn