

## Anti-AMY2A antibody

<b>Cat. No.</b>	ml121941
<b>Package</b>	25 µl/100 µl/200 µl
<b>Storage</b>	-20°C, pH7.4 PBS, 0.05% NaN <sub>3</sub> , 40% Glycerol

### Product overview

<b>Description</b>	Anti-AMY2A rabbit polyclonal antibody
<b>Applications</b>	ELISA, WB, IHC
<b>Immunogen</b>	Fusion protein of human AMY2A
<b>Reactivity</b>	Human, Mouse
<b>Content</b>	0.7 mg/ml
<b>Host species</b>	Rabbit
<b>Ig class</b>	Immunogen-specific rabbit IgG
<b>Purification</b>	Antigen affinity purification

### Target information

<b>Symbol</b>	AMY2A
<b>Full name</b>	amylase, alpha 2A (pancreatic)
<b>Synonyms</b>	PA; AMY2; AMY2B
<b>Swissprot</b>	P04746

### Target Background

Amylases are secreted proteins that hydrolyze 1,4-alpha-glucoside bonds in oligosaccharides and polysaccharides, and thus catalyze the first step in digestion of dietary starch and glycogen. The human genome has a cluster of several amylase genes that are expressed at high levels in either salivary gland or pancreas. This gene encodes an amylase isoenzyme produced by the pancreas.

订购热线: 4008-898-798

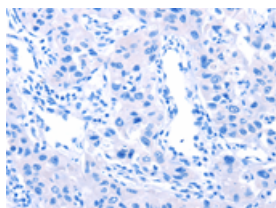
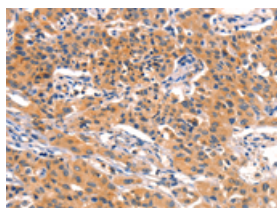
## Applications

### Immunohistochemistry

Predicted cell location: Cytoplasm

Positive control: Human lung cancer

Recommended dilution: 50-200

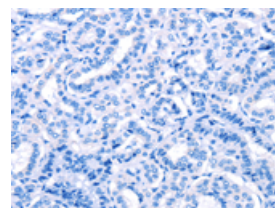
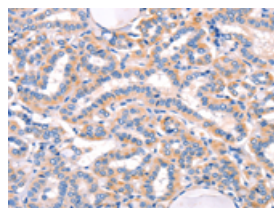


The image on the left is immunohistochemistry of paraffin-embedded Human lung cancer tissue using ml121941(AMY2A Antibody) at dilution 1/50, on the right is treated with fusion protein. (Original magnification:  $\times 200$ )

Predicted cell location: Cytoplasm

Positive control: Human thyroid cancer

Recommended dilution: 50-200



The image on the left is immunohistochemistry of paraffin-embedded Human thyroid cancer tissue using ml121941(AMY2A Antibody) at dilution 1/50, on the right is treated with fusion protein. (Original magnification:  $\times 200$ )

### Western blotting

Predicted band size: 58 kDa

Positive control: Mouse pancreas tissue

Recommended dilution: 1000-5000

Gel: 15% SDS-PAGE

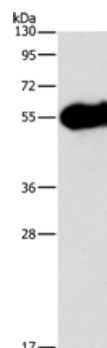
Lysate: 40  $\mu$ g

Lane: Mouse pancreas tissue

Primary antibody: ml121941(AMY2A Antibody) at dilution 1/1400

Secondary antibody: Goat anti rabbit IgG at 1/8000 dilution

Exposure time: 1 second



### ELISA

Recommended dilution: 2000-10000

联系电话: 4008-898-798, 021-61725725

联系QQ: 2881505695, 2881505696

邮箱: [mlbio\\_cn@yeah.net](mailto:mlbio_cn@yeah.net)

网址: [www.mlbio.cn](http://www.mlbio.cn)