

## Anti-MPG antibody

<b>Cat. No.</b>	ml121943
<b>Package</b>	25 µl/100 µl/200 µl
<b>Storage</b>	-20°C, pH7.4 PBS, 0.05% NaN <sub>3</sub> , 40% Glycerol

### Product overview

<b>Description</b>	Anti-MPG rabbit polyclonal antibody
<b>Applications</b>	ELISA, WB, IHC
<b>Immunogen</b>	Fusion protein of human MPG
<b>Reactivity</b>	Human
<b>Content</b>	0.5 mg/ml
<b>Host species</b>	Rabbit
<b>Ig class</b>	Immunogen-specific rabbit IgG
<b>Purification</b>	Antigen affinity purification

### Target information

<b>Symbol</b>	MPG
<b>Full name</b>	N-methylpurine-DNA glycosylase
<b>Synonyms</b>	AAG; MDG; ADPG; APNG; Mid1; anpg; PIG11; PIG16; CRA36.1
<b>Swissprot</b>	P29372

### Target Background

Maintenance of DNA sequences is necessary for vertebrates and other life. DNA is under constant stress by a plethora of DNA-damaging agents present in both the environment and within cells. The potentially deleterious effects of DNA lesions in cells are elegantly resolved by sophisticated DNA repair systems, including base excision repair (BER), nucleotide excision repair (NER) and DNA repair methyltransferase (MTase). Methylated bases, such as 3-methyladenine (3MeA) and 7-methylguanine (7MeG) can be formed by agents in the environment and by endogenous cellular processes. Consequently, in the absence of exposure to environmental agents, DNA methylation damage can be incurred on the genomic DNA of normal mammalian cells. DNA N-glycosylases are base excision-repair proteins that locate and cleave damaged bases from DNA as the first step in restoring the sequence.

订购热线: 4008-898-798

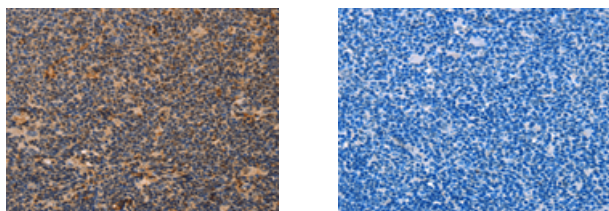
### Applications

#### Immunohistochemistry

Predicted cell location: Nucleus and Cytoplasm

Positive control: Human Lymphoma

Recommended dilution: 50-200



The image on the left is immunohistochemistry of paraffin-embedded Human Lymphoma tissue using ml121943(MPG Antibody) at dilution 1/40, on the right is treated with fusion protein. (Original magnification:  $\times 200$ )

#### Western blotting

Predicted band size: 32 kDa

Positive control: Lovo and PC3 cells

Recommended dilution: 1000-5000

Gel: 8%SDS-PAGE

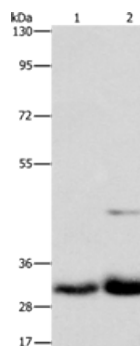
Lysate: 40  $\mu$ g

Lane 1-2: Lovo cells, PC3 cells

Primary antibody: ml121943(MPG Antibody) at dilution 1/950

Secondary antibody: Goat anti rabbit IgG at 1/8000 dilution

Exposure time: 1 minute



#### ELISA

Recommended dilution: 2000-10000

联系电话: 4008-898-798, 021-61725725

联系QQ: 2881505695, 2881505696

邮箱: [mlbio\\_cn@yeah.net](mailto:mlbio_cn@yeah.net)

网址: [www.mlbio.cn](http://www.mlbio.cn)