

Anti-BRE antibody

Cat. No.	ml121997
Package	25 µl/100 µl/200 µl
Storage	-20°C, pH7.4 PBS, 0.05% NaN ₃ , 40% Glycerol

Product overview

Description	Anti-BRE rabbit polyclonal antibody
Applications	ELISA, WB, IHC
Immunogen	Fusion protein of human BRE
Reactivity	Human, Mouse, Rat
Content	0.5 mg/ml
Host species	Rabbit
Ig class	Immunogen-specific rabbit IgG
Purification	Antigen affinity purification

Target information

Symbol	BRE
Full name	brain and reproductive organ-expressed (TNFRSF1A modulator)
Synonyms	BRCC4; BRCC45
Swissprot	Q9NXR7

Target Background

Brain and reproductive organ-expressed protein (BRE) is a 415 amino acid protein which binds to the intracellular juxtamembrane domain of the death receptor, tumor necrosis factor receptor 1 (TNF-R1). BRE also binds to the death receptor, FAS. BRE downregulates TNF α -induced activation of NF κ B and may play a role in homeostasis or cellular differentiation in cells of epithelial, neural and germ line origins. It inhibits components of the death-inducing signaling complexes that are necessary for activation of the mitochondria, thereby mediating apoptosis. BRE is strongly expressed in the adrenal cortex, medulla, testis and pancreas, and is weakly expressed in the thymus, thyroid, stomach and small intestine.

订购热线: 4008-898-798

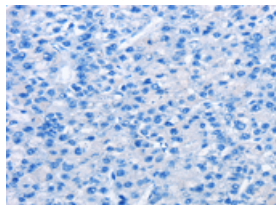
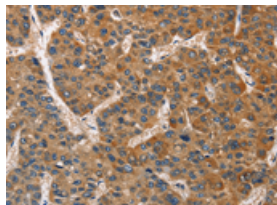
Applications

Immunohistochemistry

Predicted cell location: Cytoplasm

Positive control: Human liver cancer

Recommended dilution: 50-200

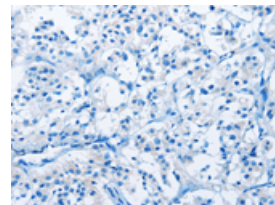
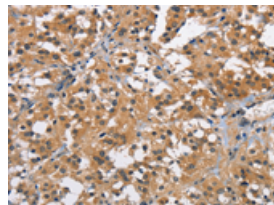


The image on the left is immunohistochemistry of paraffin-embedded Human liver cancer tissue using ml121997(BRE Antibody) at dilution 1/40, on the right is treated with fusion protein. (Original magnification: $\times 200$)

Predicted cell location: Cytoplasm

Positive control: Human thyroid cancer

Recommended dilution: 50-200



The image on the left is immunohistochemistry of paraffin-embedded Human thyroid cancer tissue using ml121997(BRE Antibody) at dilution 1/40, on the right is treated with fusion protein. (Original magnification: $\times 200$)

Western blotting

Predicted band size: 44 kDa

Positive control: A431

Recommended dilution: 500-2000

Gel: 8%SDS-PAGE

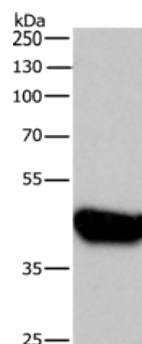
Lysate: 40 μ g

Lane: A431 cells

Primary antibody: ml121997(BRE Antibody) at dilution 1/750

Secondary antibody: Goat anti rabbit IgG at 1/8000 dilution

Exposure time: 30 seconds



ELISA

Recommended dilution: 2000-5000

联系电话: 4008-898-798, 021-61725725

联系QQ: 2881505695, 2881505696

邮箱: mlbio_cn@yeah.net

网址: www.mlbio.cn