

Anti-CAB39L antibody

Cat. No.	ml122008
Package	25 µl/100 µl/200 µl
Storage	-20°C, pH7.4 PBS, 0.05% NaN ₃ , 40% Glycerol

Product overview

Description	Anti-CAB39L rabbit polyclonal antibody
Applications	ELISA, WB, IHC
Immunogen	Fusion protein of human CAB39L
Reactivity	Human, Mouse
Content	0.3 mg/ml
Host species	Rabbit
Ig class	Immunogen-specific rabbit IgG
Purification	Antigen affinity purification

Target information

Symbol	CAB39L
Full name	calcium binding protein 39-like
Synonyms	MO2L; MO25-BETA; bA103J18.3; RP11-103J18.3
Swissprot	Q9H9S4

Target Background

Calcium-binding protein 39-like is a protein that in humans is encoded by the CAB39L gene. CAB39L (calcium binding protein 39-like), also known as MO25L (MO25-like) or MO2L, is a 337 amino acid protein that is similar to MO25 and is found in the serum of nearly half of all patients diagnosed with acute monocytic leukemia. This suggests a role for CAB39L in carcinogenesis.

订购热线: 4008-898-798

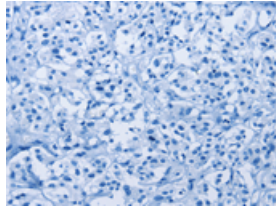
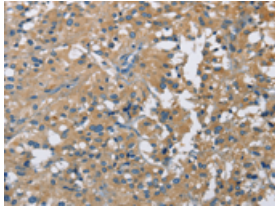
Applications

Immunohistochemistry

Predicted cell location: Cytoplasm

Positive control: Human thyroid cancer

Recommended dilution: 50-200

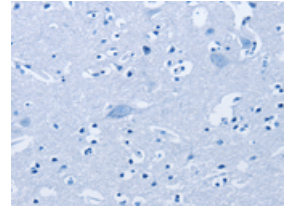
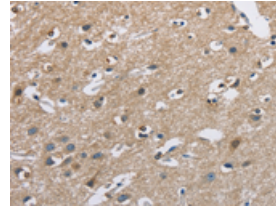


The image on the left is immunohistochemistry of paraffin-embedded Human thyroid cancer tissue using ml122008(CAB39L Antibody) at dilution 1/40, on the right is treated with fusion protein. (Original magnification: $\times 200$)

Predicted cell location: Cytoplasm

Positive control: Human brain

Recommended dilution: 50-200



The image on the left is immunohistochemistry of paraffin-embedded Human brain tissue using ml122008(CAB39L Antibody) at dilution 1/40, on the right is treated with fusion protein. (Original magnification: $\times 200$)

Western blotting

Predicted band size: 39 kDa

Positive control: Human fetal brain tissue and 231 cells

Recommended dilution: 500-2000

Gel: 8%SDS-PAGE

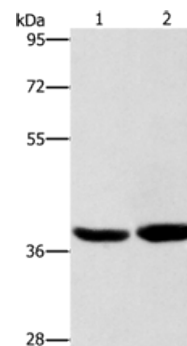
Lysate: 40 μ g

Lane 1-2: Human fetal brain tissue, 231 cells

Primary antibody: ml122008(CAB39L Antibody) at dilution 1/400

Secondary antibody: Goat anti rabbit IgG at 1/8000 dilution

Exposure time: 15 seconds



ELISA

Recommended dilution: 2000-5000

联系电话: 4008-898-798, 021-61725725

联系QQ: 2881505695, 2881505696

邮箱: mlbio_cn@yeah.net

网址: www.mlbio.cn