

Anti-CAST antibody

Cat. No.	ml122017
Package	25 µl/100 µl/200 µl
Storage	-20°C, pH7.4 PBS, 0.05% NaN ₃ , 40% Glycerol

Product overview

Description	Anti-CAST rabbit polyclonal antibody
Applications	ELISA, WB, IHC
Immunogen	Fusion protein of human CAST
Reactivity	Human
Content	0.8 mg/ml
Host species	Rabbit
Ig class	Immunogen-specific rabbit IgG
Purification	Antigen affinity purification

Target information

Symbol	CAST
Full name	calpastatin
Synonyms	BS-17
Swissprot	P20810

Target Background

The protein encoded by this gene is an endogenous calpain (calcium-dependent cysteine protease) inhibitor. It consists of an N-terminal domain L and four repetitive calpain-inhibition domains (domains 1-4), and it is involved in the proteolysis of amyloid precursor protein. The calpain/calpastatin system is involved in numerous membrane fusion events, such as neural vesicle exocytosis and platelet and red-cell aggregation. The encoded protein is also thought to affect the expression levels of genes encoding structural or regulatory proteins. Alternatively spliced transcript variants encoding different isoforms have been described.

订购热线: 4008-898-798

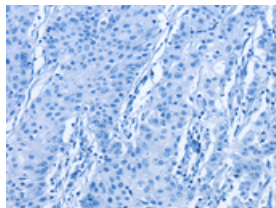
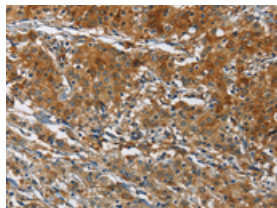
Applications

Immunohistochemistry

Predicted cell location: Cytoplasm

Positive control: Human gastric cancer

Recommended dilution: 100-300

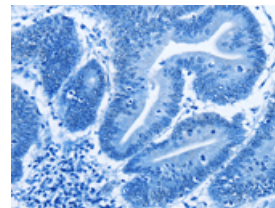
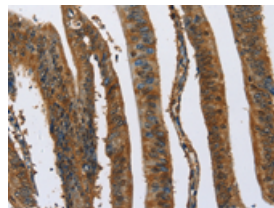


The image on the left is immunohistochemistry of paraffin-embedded Human gastric cancer tissue using ml122017(CAST Antibody) at dilution 1/70, on the right is treated with fusion protein. (Original magnification: $\times 200$)

Predicted cell location: Cytoplasm

Positive control: Human colon cancer

Recommended dilution: 100-300



The image on the left is immunohistochemistry of paraffin-embedded Human colon cancer tissue using ml122017(CAST Antibody) at dilution 1/70, on the right is treated with fusion protein. (Original magnification: $\times 200$)

Western blotting

Predicted band size: 77 kDa

Positive control: Lovo cells

Recommended dilution: 500-2000

Gel: 8%SDS-PAGE

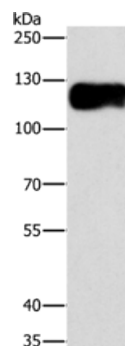
Lysate: 40 μ g

Lane: Lovo cells

Primary antibody: ml122017(CAST Antibody) at dilution 1/750

Secondary antibody: Goat anti rabbit IgG at 1/8000 dilution

Exposure time: 7 seconds



ELISA

Recommended dilution: 2000-5000

联系电话: 4008-898-798, 021-61725725

联系QQ: 2881505695, 2881505696

邮箱: mlbio_cn@yeah.net

网址: www.mlbio.cn