

## Anti-TBX6 antibody

<b>Cat. No.</b>	ml120640
<b>Package</b>	25 µl/100 µl/200 µl
<b>Storage</b>	-20°C, pH7.4 PBS, 0.05% NaN <sub>3</sub> , 40% Glycerol

### Product overview

<b>Description</b>	Anti-TBX6 rabbit polyclonal antibody
<b>Applications</b>	ELISA, IHC
<b>Immunogen</b>	Fusion protein of human TBX6
<b>Reactivity</b>	Human, Mouse, Rat
<b>Content</b>	0.1 mg/ml
<b>Host species</b>	Rabbit
<b>Ig class</b>	Immunogen-specific rabbit IgG
<b>Purification</b>	Antigen affinity purification

### Target information

<b>Symbol</b>	TBX6
<b>Full name</b>	T-box 6
<b>Synonyms</b>	SCDO5
<b>Swissprot</b>	O95947

### Target Background

This gene is a member of a phylogenetically conserved family of genes that share a common DNA-binding domain, the T-box. T-box genes encode transcription factors involved in the regulation of developmental processes. Knockout studies in mice indicate that this gene is important for specification of paraxial mesoderm structures.

订购热线: 4008-898-798

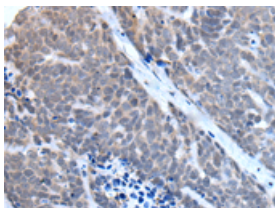
## Applications

### Immunohistochemistry

Predicted cell location: Nucleus

Positive control: Human thyroid cancer

Recommended dilution: 25-100

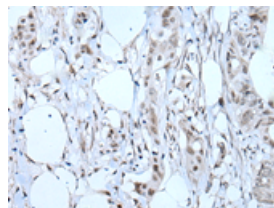


The image is immunohistochemistry of paraffin-embedded Human thyroid cancer tissue using ml120640(TBX6 Antibody) at dilution 1/30. (Original magnification: ×200)

Predicted cell location: Nucleus

Positive control: Human colorectal cancer

Recommended dilution: 25-100



The image is immunohistochemistry of paraffin-embedded Human colorectal cancer tissue using ml120640(TBX6 Antibody) at dilution 1/30. (Original magnification: ×200)

### ELISA

Recommended dilution: 2000-5000

联系电话: 4008-898-798, 021-61725725

联系QQ: 2881505695, 2881505696

邮箱: [mlbio\\_cn@yeah.net](mailto:mlbio_cn@yeah.net)

网址: [www.mlbio.cn](http://www.mlbio.cn)