

Anti-CNDP1 antibody

| | |
|-----------------|---|
| Cat. No. | ml122127 |
| Package | 25 µl/100 µl/200 µl |
| Storage | -20°C, pH7.4 PBS, 0.05% NaN ₃ , 40% Glycerol |

Product overview

| | |
|---------------------|---------------------------------------|
| Description | Anti-CNDP1 rabbit polyclonal antibody |
| Applications | ELISA, WB, IHC |
| Immunogen | Fusion protein of human CNDP1 |
| Reactivity | Human, Mouse, Rat |
| Content | 0.1 mg/ml |
| Host species | Rabbit |
| Ig class | Immunogen-specific rabbit IgG |
| Purification | Antigen affinity purification |

Target information

| | |
|------------------|---|
| Symbol | CNDP1 |
| Full name | carnosine dipeptidase 1 (metallopeptidase M20 family) |
| Synonyms | CN1; CPGL2; HsT2308 |
| Swissprot | Q96KN2 |

Target Background

This gene encodes a member of the M20 metalloprotease family. The encoded protein is specifically expressed in the brain, is a homodimeric dipeptidase which was identified as human carnosinase. This gene contains trinucleotide (CTG) repeat length polymorphism in the coding region.

订购热线: 4008-898-798

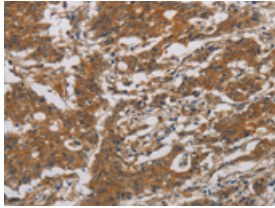
Applications

Immunohistochemistry

Predicted cell location: Cytoplasm

Positive control: Human gastric cancer

Recommended dilution: 50-200

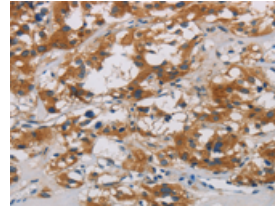


The image is immunohistochemistry of paraffin-embedded Human gastric cancer tissue using ml122127(CNDP1 Antibody) at dilution 1/30. (Original magnification: ×200)

Predicted cell location: Cytoplasm

Positive control: Human thyroid cancer

Recommended dilution: 50-200



The image is immunohistochemistry of paraffin-embedded Human thyroid cancer tissue using ml122127(CNDP1 Antibody) at dilution 1/30. (Original magnification: ×200)

Western blotting

Predicted band size: 57 kDa

Positive control: 293T cells

Recommended dilution: 500-2000

Gel: 8%SDS-PAGE

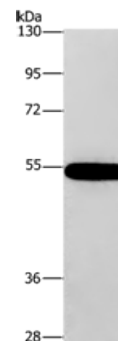
Lysate: 40 µg

Lane: 293T cells

Primary antibody: ml122127(CNDP1 Antibody) at dilution 1/320

Secondary antibody: Goat anti rabbit IgG at 1/8000 dilution

Exposure time: 10 seconds



ELISA

Recommended dilution: 2000-5000

联系电话: 4008-898-798, 021-61725725

联系QQ: 2881505695, 2881505696

邮箱: mlbio_cn@yeah.net

网址: www.mlbio.cn