

## Anti-CORO1C antibody

<b>Cat. No.</b>	ml122136
<b>Package</b>	25 µl/100 µl/200 µl
<b>Storage</b>	-20°C, pH7.4 PBS, 0.05% NaN <sub>3</sub> , 40% Glycerol

### Product overview

<b>Description</b>	Anti-CORO1C rabbit polyclonal antibody
<b>Applications</b>	ELISA, WB, IHC
<b>Immunogen</b>	Fusion protein of human CORO1C
<b>Reactivity</b>	Human, Mouse
<b>Content</b>	0.6 mg/ml
<b>Host species</b>	Rabbit
<b>Ig class</b>	Immunogen-specific rabbit IgG
<b>Purification</b>	Antigen affinity purification

### Target information

<b>Symbol</b>	CORO1C
<b>Full name</b>	coronin, actin binding protein, 1C
<b>Synonyms</b>	HCRNN4
<b>Swissprot</b>	Q9ULV4

### Target Background

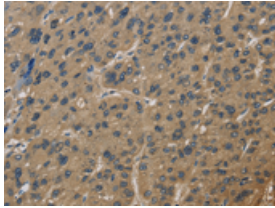
This gene encodes a member of the WD-repeat protein family. WD repeats are minimally conserved regions of approximately 40 amino acids typically bracketed by gly-his and trp-aspartate (GH-WD), which may facilitate formation of heterotrimeric or multiprotein complexes. Members of this family are involved in a variety of cellular processes, including cell cycle progression, signal transduction, apoptosis, and gene regulation. Three transcript variants encoding two different isoforms have been found for this gene.

订购热线: 4008-898-798

#### Applications

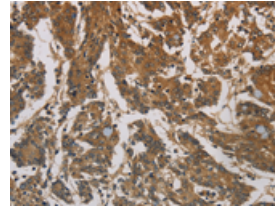
##### Immunohistochemistry

Predicted cell location: Cytoplasm  
Positive control: Human liver cancer  
Recommended dilution: 100-300



The image is immunohistochemistry of paraffin-embedded Human liver cancer tissue using ml122136(CORO1C Antibody) at dilution 1/60. (Original magnification:  $\times 200$ )

Predicted cell location: Cytoplasm  
Positive control: Human colon cancer  
Recommended dilution: 100-300



The image is immunohistochemistry of paraffin-embedded Human colon cancer tissue using ml122136(CORO1C Antibody) at dilution 1/60. (Original magnification:  $\times 200$ )

##### Western blotting

Predicted band size: 53 kDa  
Positive control: Lovo cells  
Recommended dilution: 500-2000

Gel: 8%SDS-PAGE

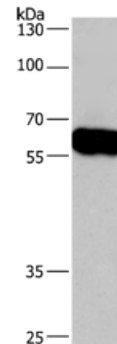
Lysate: 40  $\mu$ g

Lane: Lovo cells

Primary antibody: ml122136(CORO1C Antibody) at dilution 1/670

Secondary antibody: Goat anti rabbit IgG at 1/8000 dilution

Exposure time: 40 seconds



##### ELISA

Recommended dilution: 2000-5000

联系电话: 4008-898-798, 021-61725725

联系QQ: 2881505695, 2881505696

邮箱: [mlbio\\_cn@yeah.net](mailto:mlbio_cn@yeah.net)

网址: [www.mlbio.cn](http://www.mlbio.cn)