

Anti-DDX53 antibody

Cat. No.	ml122224
Package	25 µl/100 µl/200 µl
Storage	-20°C, pH7.4 PBS, 0.05% NaN ₃ , 40% Glycerol

Product overview

Description	Anti-DDX53 rabbit polyclonal antibody
Applications	ELISA, WB, IHC
Immunogen	Fusion protein of human DDX53
Reactivity	Human
Content	1 mg/ml
Host species	Rabbit
Ig class	Immunogen-specific rabbit IgG
Purification	Antigen affinity purification

Target information

Symbol	DDX53
Full name	DEAD (Asp-Glu-Ala-Asp) box polypeptide 53
Synonyms	CAGE; CT26
Swissprot	Q86TM3

Target Background

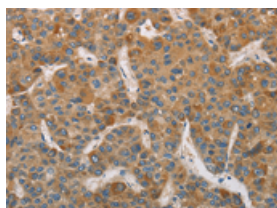
This intronless gene encodes a protein which contains several domains found in members of the DEAD-box helicase protein family. Other members of this protein family participate in ATP-dependent RNA unwinding.

订购热线: 4008-898-798

Applications

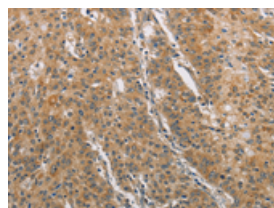
Immunohistochemistry

Predicted cell location: Cytoplasm
Positive control: Human liver cancer
Recommended dilution: 100-300



The image on the left is immunohistochemistry of paraffin-embedded Human liver cancer tissue using ml122224(DDX53 Antibody) at dilution 1/75, on the right is treated with fusion protein. (Original magnification: $\times 200$)

Predicted cell location: Cytoplasm
Positive control: Human gastric cancer
Recommended dilution: 100-300



The image on the left is immunohistochemistry of paraffin-embedded Human gastric cancer tissue using ml122224(DDX53 Antibody) at dilution 1/75, on the right is treated with fusion protein. (Original magnification: $\times 200$)

Western blotting

Predicted band size: 71 kDa
Positive control: HepG2 cells
Recommended dilution: 200-1000

Gel: 8%SDS-PAGE

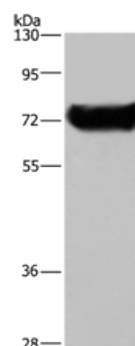
Lysate: 40 μ g

Lane: HepG2 cells

Primary antibody: ml122224(DDX53 Antibody) at dilution 1/200

Secondary antibody: Goat anti rabbit IgG at 1/8000 dilution

Exposure time: 1 minute



ELISA

Recommended dilution: 2000-10000

联系电话: 4008-898-798, 021-61725725

联系QQ: 2881505695, 2881505696

邮箱: mlbio_cn@yeah.net

网址: www.mlbio.cn