

Anti-DEGS1 antibody

Cat. No.	ml122227
Package	25 µl/100 µl/200 µl
Storage	-20°C, pH7.4 PBS, 0.05% NaN ₃ , 40% Glycerol

Product overview

Description	Anti-DEGS1 rabbit polyclonal antibody
Applications	ELISA, WB, IHC
Immunogen	Fusion protein of human DEGS1
Reactivity	Human, Mouse, Rat
Content	0.7 mg/ml
Host species	Rabbit
Ig class	Immunogen-specific rabbit IgG
Purification	Antigen affinity purification

Target information

Symbol	DEGS1
Full name	delta(4)-desaturase, sphingolipid 1
Synonyms	MLD; DEGS; DES1; Des-1; FADS7; MIG15; DEGS-1
Swissprot	O15121

Target Background

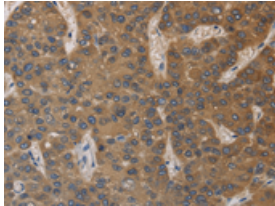
This gene encodes a member of the membrane fatty acid desaturase family which is responsible for inserting double bonds into specific positions in fatty acids. This protein contains three His-containing consensus motifs that are characteristic of a group of membrane fatty acid desaturases. It is predicted to be a multiple membrane-spanning protein localized to the endoplasmic reticulum. Overexpression of this gene inhibited biosynthesis of the EGF receptor, suggesting a possible role of a fatty acid desaturase in regulating biosynthetic processing of the EGF receptor.

订购热线: 4008-898-798

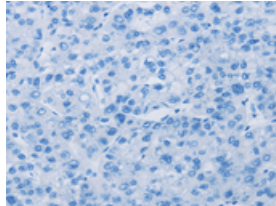
Applications

Immunohistochemistry

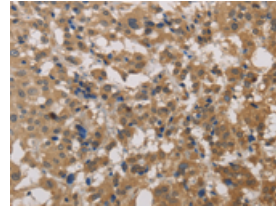
Predicted cell location: Cytoplasm
Positive control: Human liver cancer
Recommended dilution: 100-300



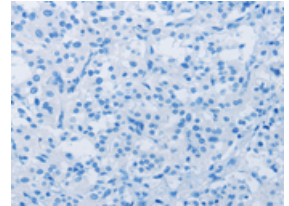
The image on the left is immunohistochemistry of paraffin-embedded Human liver cancer tissue using ml122227(DEGS1 Antibody) at dilution 1/40, on the right is treated with fusion protein. (Original magnification: $\times 200$)



Predicted cell location: Cytoplasm
Positive control: Human thyroid cancer
Recommended dilution: 100-300



The image on the left is immunohistochemistry of paraffin-embedded Human thyroid cancer tissue using ml122227(DEGS1 Antibody) at dilution 1/40, on the right is treated with fusion protein. (Original magnification: $\times 200$)



Western blotting

Predicted band size: 38 kDa
Positive control: Mouse small intestine and skin tissue
Recommended dilution: 200-1000

Gel: 8%SDS-PAGE

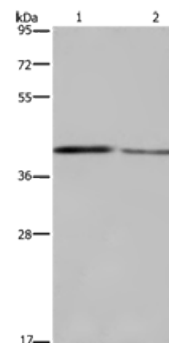
Lysate: 40 μ g

Lane 1-2: Mouse small intestine tissue, Mouse skin tissue

Primary antibody: ml122227(DEGS1 Antibody) at dilution 1/450

Secondary antibody: Goat anti rabbit IgG at 1/8000 dilution

Exposure time: 5 minutes



ELISA

Recommended dilution: 1000-2000

联系电话: 4008-898-798, 021-61725725

联系QQ: 2881505695, 2881505696

邮箱: mlbio_cn@yeah.net

网址: www.mlbio.cn