

## Anti-ECE2 antibody

<b>Cat. No.</b>	ml122268
<b>Package</b>	25 µl/100 µl/200 µl
<b>Storage</b>	-20°C, pH7.4 PBS, 0.05% NaN <sub>3</sub> , 40% Glycerol

### Product overview

<b>Description</b>	Anti-ECE2 rabbit polyclonal antibody
<b>Applications</b>	ELISA, WB, IHC
<b>Immunogen</b>	Fusion protein of human ECE2
<b>Reactivity</b>	Human, Mouse
<b>Content</b>	0.3 mg/ml
<b>Host species</b>	Rabbit
<b>Ig class</b>	Immunogen-specific rabbit IgG
<b>Purification</b>	Antigen affinity purification

### Target information

<b>Symbol</b>	ECE2
<b>Full name</b>	endothelin converting enzyme 2
<b>Synonyms</b>	
<b>Swissprot</b>	O60344

### Target Background

This gene encodes a member of the M13 family, which includes type 2 integral membrane metallopeptidases. The encoded enzyme is a membrane-bound zinc-dependent metalloprotease. The enzyme catalyzes the cleavage of big endothelin to produce the vasoconstrictor endothelin-1, and plays a role in the processing of several neuroendocrine peptides. It may also have methyltransferase activity. Alternative splicing results in multiple transcript variants.

订购热线: 4008-898-798

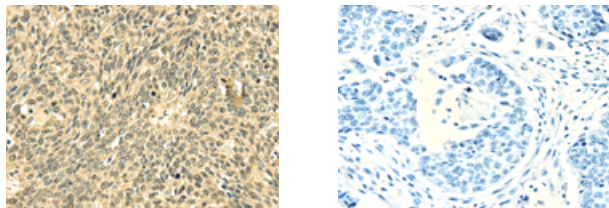
## Applications

### Immunohistochemistry

Predicted cell location: Cytoplasm and Nucleus

Positive control: Human lung cancer

Recommended dilution: 25-100



The image on the left is immunohistochemistry of paraffin-embedded Human lung cancer tissue using ml122268(ECE2 Antibody) at dilution 1/20, on the right is treated with fusion protein. (Original magnification: ×200)

### Western blotting

Predicted band size: 100 kDa

Positive control: Mouse kidney tissue

Recommended dilution: 200-1000

Gel: 6%SDS-PAGE

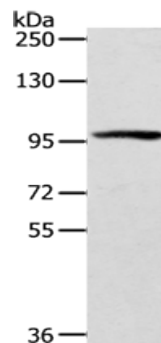
Lysate: 40 µg

Lane: Mouse kidney tissue

Primary antibody: ml122268(ECE2 Antibody) at dilution 1/300

Secondary antibody: Goat anti rabbit IgG at 1/8000 dilution

Exposure time: 3 minutes



### ELISA

Recommended dilution: 1000-2000

联系电话: 4008-898-798, 021-61725725

联系QQ: 2881505695, 2881505696

邮箱: [mlbio\\_cn@yeah.net](mailto:mlbio_cn@yeah.net)

网址: [www.mlbio.cn](http://www.mlbio.cn)