

Anti-EID1 antibody

Cat. No.	ml122277
Package	25 µl/100 µl/200 µl
Storage	-20°C, pH7.4 PBS, 0.05% NaN ₃ , 40% Glycerol

Product overview

Description	Anti-EID1 rabbit polyclonal antibody
Applications	ELISA, WB, IHC
Immunogen	Fusion protein of human EID1
Reactivity	Human, Mouse
Content	0.4 mg/ml
Host species	Rabbit
Ig class	Immunogen-specific rabbit IgG
Purification	Antigen affinity purification

Target information

Symbol	EID1
Full name	EP300 interacting inhibitor of differentiation 1
Synonyms	CR11; EID-1; RBP21; PTD014; C15orf3; PNAS-22; IRO45620
Swissprot	Q9Y6B2

Target Background

E1A-like inhibitor of differentiation-1 (EID-1), an acetyltransferase enzyme, binds both the retinoblastoma protein (Rb), a regulator of cell cycle and tissue specific transcription, and the adenovirus E1A-associated cellular p300 transcriptional co-activator protein. EID-1 inhibits cellular differentiation by blocking the histone acetyltransferase activity of p300. EID-1 also acetylates both histones and non-histone proteins such as NCOA3 co-activator. By acetylating histones, EID-1 gives a specific tag for transcriptional activation. In addition to binding Rb and p300, EID-1 also binds to phosphorylated CREB protein, mediating cAMP gene regulation. EID-1 augments the activity of phosphorylated CREB and activates transcription of cAMP responsive genes as a co-activator.

订购热线: 4008-898-798

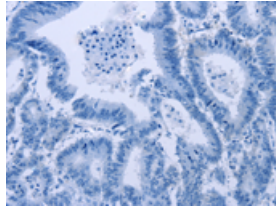
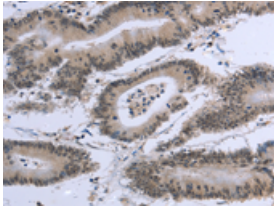
Applications

Immunohistochemistry

Predicted cell location: Nucleus or Cytoplasm

Positive control: Human colon cancer

Recommended dilution: 25-100

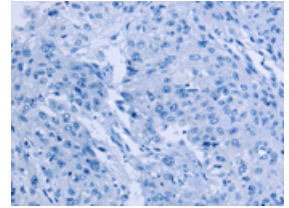
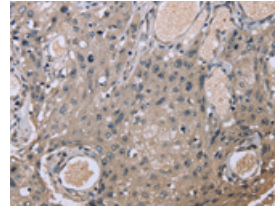


The image on the left is immunohistochemistry of paraffin-embedded Human colon cancer tissue using ml122277(EID1 Antibody) at dilution 1/20, on the right is treated with fusion protein. (Original magnification: $\times 200$)

Predicted cell location: Nucleus or Cytoplasm

Positive control: Human esophagus cancer

Recommended dilution: 25-100



The image on the left is immunohistochemistry of paraffin-embedded Human esophagus cancer tissue using ml122277(EID1 Antibody) at dilution 1/20, on the right is treated with fusion protein. (Original magnification: $\times 200$)

Western blotting

Predicted band size: 21 kDa

Positive control: Mouse heart tissue

Recommended dilution: 200-1000

Gel: 12% SDS-PAGE

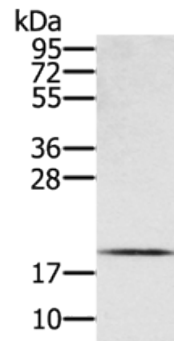
Lysate: 40 μ g

Lane: Mouse heart tissue

Primary antibody: ml122277(EID1 Antibody) at dilution 1/300

Secondary antibody: Goat anti rabbit IgG at 1/8000 dilution

Exposure time: 3 minutes



ELISA

Recommended dilution: 1000-2000

联系电话: 4008-898-798, 021-61725725

联系QQ: 2881505695, 2881505696

邮箱: mlbio_cn@yeah.net

网址: www.mlbio.cn