

Anti-FHL3 antibody

Cat. No.	ml122372
Package	25 µl/100 µl/200 µl
Storage	-20°C, pH7.4 PBS, 0.05% NaN ₃ , 40% Glycerol

Product overview

Description	Anti-FHL3 rabbit polyclonal antibody
Applications	ELISA, WB, IHC
Immunogen	Fusion protein of human FHL3
Reactivity	Human, Mouse
Content	0.5 mg/ml
Host species	Rabbit
Ig class	Immunogen-specific rabbit IgG
Purification	Antigen affinity purification

Target information

Symbol	FHL3
Full name	four and a half LIM domains 3
Synonyms	SLIM2
Swissprot	Q13643

Target Background

The protein encoded by this gene is a member of a family of proteins containing a four-and-a-half LIM domain, which is a highly conserved double zinc finger motif. The encoded protein has been shown to interact with the cancer developmental regulators SMAD2, SMAD3, and SMAD4, the skeletal muscle myogenesis protein MyoD, and the high-affinity IgE beta chain regulator MZF-1. This protein may be involved in tumor suppression, repression of MyoD expression, and repression of IgE receptor expression. Two transcript variants encoding different isoforms have been found for this gene.

订购热线: 4008-898-798

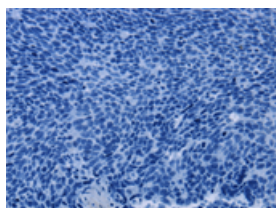
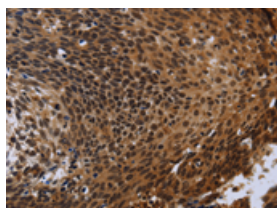
Applications

Immunohistochemistry

Predicted cell location: Nucleus

Positive control: Human cervical cancer

Recommended dilution: 50-200

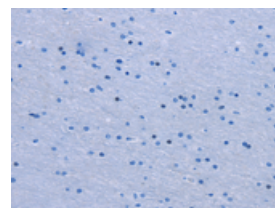
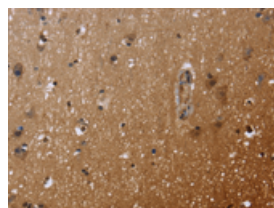


The image on the left is immunohistochemistry of paraffin-embedded Human cervical cancer tissue using ml122372(FHL3 Antibody) at dilution 1/40, on the right is treated with fusion protein. (Original magnification: $\times 200$)

Predicted cell location: Nucleus

Positive control: Human brain

Recommended dilution: 50-200



The image on the left is immunohistochemistry of paraffin-embedded Human brain tissue using ml122372(FHL3 Antibody) at dilution 1/40, on the right is treated with fusion protein. (Original magnification: $\times 200$)

Western blotting

Predicted band size: 31 kDa

Positive control: Mouse skeletal muscle tissue

Recommended dilution: 1000-5000

Gel: 8%SDS-PAGE

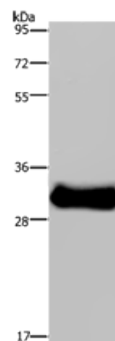
Lysate: 40 μ g

Lane: Mouse skeletal muscle tissue

Primary antibody: ml122372(FHL3 Antibody) at dilution 1/1600

Secondary antibody: Goat anti rabbit IgG at 1/8000 dilution

Exposure time: 30 seconds



ELISA

Recommended dilution: 2000-10000

联系电话: 4008-898-798, 021-61725725

联系QQ: 2881505695, 2881505696

邮箱: mlbio_cn@yeah.net

网址: www.mlbio.cn