

## Anti-FRK antibody

<b>Cat. No.</b>	ml122386
<b>Package</b>	25 µl/100 µl/200 µl
<b>Storage</b>	-20°C, pH7.4 PBS, 0.05% NaN <sub>3</sub> , 40% Glycerol

### Product overview

<b>Description</b>	Anti-FRK rabbit polyclonal antibody
<b>Applications</b>	ELISA, WB, IHC
<b>Immunogen</b>	Fusion protein of human FRK
<b>Reactivity</b>	Human, Mouse, Rat
<b>Content</b>	0.7 mg/ml
<b>Host species</b>	Rabbit
<b>Ig class</b>	Immunogen-specific rabbit IgG
<b>Purification</b>	Antigen affinity purification

### Target information

<b>Symbol</b>	FRK
<b>Full name</b>	fyn-related kinase
<b>Synonyms</b>	GTK; RAK; PTK5
<b>Swissprot</b>	P42685

### Target Background

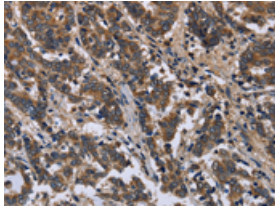
The protein encoded by this gene belongs to the TYR family of protein kinases. This tyrosine kinase is a nuclear protein and may function during G1 and S phase of the cell cycle and suppress growth.

订购热线: 4008-898-798

#### Applications

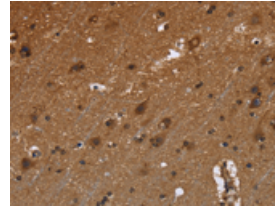
##### Immunohistochemistry

Predicted cell location: Cytoplasm  
Positive control: Human liver cancer  
Recommended dilution: 50-200



The image is immunohistochemistry of paraffin-embedded Human liver cancer tissue using ml122386(FRK Antibody) at dilution 1/50. (Original magnification:  $\times 200$ )

Predicted cell location: Cytoplasm  
Positive control: Human brain  
Recommended dilution: 50-200



The image is immunohistochemistry of paraffin-embedded Human brain tissue using ml122386(FRK Antibody) at dilution 1/50. (Original magnification:  $\times 200$ )

##### Western blotting

Predicted band size: 58 kDa  
Positive control: K562 and A431 cells  
Recommended dilution: 500-2000

Gel: 6%SDS-PAGE

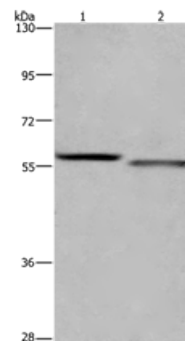
Lysate: 40  $\mu$ g

Lane 1-2: K562 cells, A431 cells

Primary antibody: ml122386(FRK Antibody) at dilution 1/1200

Secondary antibody: Goat anti rabbit IgG at 1/8000 dilution

Exposure time: 40 seconds



##### ELISA

Recommended dilution: 2000-5000

联系电话: 4008-898-798, 021-61725725

联系QQ: 2881505695, 2881505696

邮箱: [mlbio\\_cn@yeah.net](mailto:mlbio_cn@yeah.net)

网址: [www.mlbio.cn](http://www.mlbio.cn)