

Anti-GGCX antibody

Cat. No.	ml122414
Package	25 µl/100 µl/200 µl
Storage	-20°C, pH7.4 PBS, 0.05% NaN ₃ , 40% Glycerol

Product overview

Description	Anti-GGCX rabbit polyclonal antibody
Applications	ELISA, WB, IHC
Immunogen	Fusion protein of human GGCX
Reactivity	Human, Mouse, Rat
Content	0.5 mg/ml
Host species	Rabbit
Ig class	Immunogen-specific rabbit IgG
Purification	Antigen affinity purification

Target information

Symbol	GGCX
Full name	gamma-glutamyl carboxylase
Synonyms	VKCFD1
Swissprot	P38435

Target Background

This gene encodes an enzyme which catalyzes the posttranslational modification of vitamin K-dependent protein. Many of these vitamin K-dependent proteins are involved in coagulation so the function of the encoded enzyme is essential for hemostasis. Mutations in this gene are associated with vitamin K-dependent coagulation defect and PXE-like disorder with multiple coagulation factor deficiency. Multiple transcript variants encoding different isoforms have been found for this gene.

订购热线: 4008-898-798

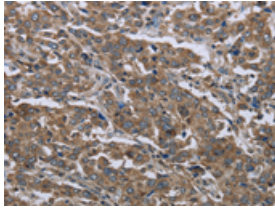
Applications

Immunohistochemistry

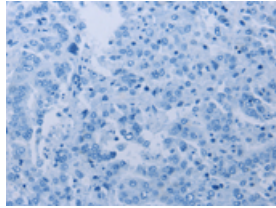
Predicted cell location: Cytoplasm

Positive control: Human liver cancer

Recommended dilution: 50-200



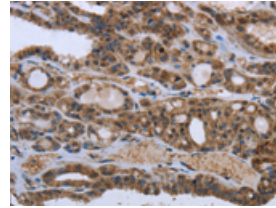
The image on the left is immunohistochemistry of paraffin-embedded Human liver cancer tissue using ml122414(GGCX Antibody) at dilution 1/50, on the right is treated with fusion protein. (Original magnification: $\times 200$)



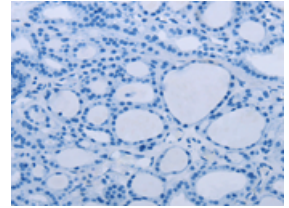
Predicted cell location: Cytoplasm

Positive control: Human thyroid cancer

Recommended dilution: 50-200



The image on the left is immunohistochemistry of paraffin-embedded Human thyroid cancer tissue using ml122414(GGCX Antibody) at dilution 1/50, on the right is treated with fusion protein. (Original magnification: $\times 200$)



Western blotting

Predicted band size: 88 kDa

Positive control: MCF7, hela and 293T cells

Recommended dilution: 500-2000

Gel: 6%SDS-PAGE

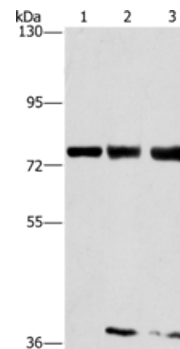
Lysate: 40 μ g

Lane 1-3: MCF7 cells, hela cells, 293T cells

Primary antibody: ml122414(GGCX Antibody) at dilution 1/400

Secondary antibody: Goat anti rabbit IgG at 1/8000 dilution

Exposure time: 40 seconds



ELISA

Recommended dilution: 2000-5000

联系电话: 4008-898-798, 021-61725725

联系QQ: 2881505695, 2881505696

邮箱: mlbio_cn@yeah.net

网址: www.mlbio.cn