

Anti-GSTO1 antibody

| | |
|-----------------|---|
| Cat. No. | ml122451 |
| Package | 25 µl/100 µl/200 µl |
| Storage | -20°C, pH7.4 PBS, 0.05% NaN ₃ , 40% Glycerol |

Product overview

| | |
|---------------------|---------------------------------------|
| Description | Anti-GSTO1 rabbit polyclonal antibody |
| Applications | ELISA, WB, IHC |
| Immunogen | Fusion protein of human GSTO1 |
| Reactivity | Human |
| Content | 1.4 mg/ml |
| Host species | Rabbit |
| Ig class | Immunogen-specific rabbit IgG |
| Purification | Antigen affinity purification |

Target information

| | |
|------------------|--|
| Symbol | GSTO1 |
| Full name | glutathione S-transferase omega 1 |
| Synonyms | P28; SPG-R; GSTO 1-1; GSTTLp28; HEL-S-21 |
| Swissprot | P78417 |

Target Background

The protein encoded by this gene is an omega class glutathione S-transferase (GST) with glutathione-dependent thiol transferase and dehydroascorbate reductase activities. GSTs are involved in the metabolism of xenobiotics and carcinogens. The encoded protein acts as a homodimer and is found in the cytoplasm. Three transcript variants encoding different isoforms have been found for this gene.

订购热线: 4008-898-798

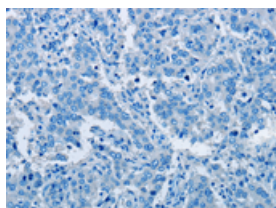
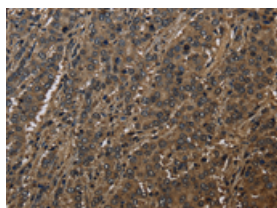
Applications

Immunohistochemistry

Predicted cell location: Cytoplasm and Nucleus

Positive control: Human liver cancer

Recommended dilution: 100-300

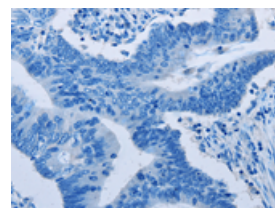
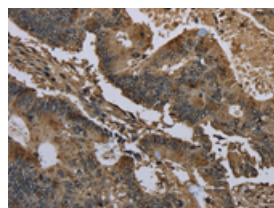


The image on the left is immunohistochemistry of paraffin-embedded Human liver cancer tissue using ml122451(GSTO1 Antibody) at dilution 1/60, on the right is treated with fusion protein. (Original magnification: $\times 200$)

Predicted cell location: Cytoplasm and Nucleus

Positive control: Human colon cancer

Recommended dilution: 100-300



The image on the left is immunohistochemistry of paraffin-embedded Human colon cancer tissue using ml122451(GSTO1 Antibody) at dilution 1/60, on the right is treated with fusion protein. (Original magnification: $\times 200$)

Western blotting

Predicted band size: 28 kDa

Positive control: Human liver cancer tissue

Recommended dilution: 500-2000

Gel: 8%SDS-PAGE

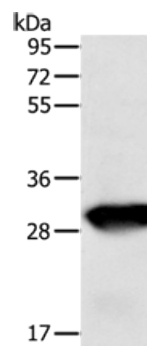
Lysate: 50 μ g

Lane: Human liver cancer tissue

Primary antibody: ml122451(GSTO1 Antibody) at dilution 1/200

Secondary antibody: Goat anti rabbit IgG at 1/8000 dilution

Exposure time: 20 seconds



ELISA

Recommended dilution: 2000-5000

联系电话: 4008-898-798, 021-61725725

联系QQ: 2881505695, 2881505696

邮箱: mlbio_cn@yeah.net

网址: www.mlbio.cn