

Anti-KDM3B antibody

Cat. No.	ml122561
Package	25 µl/100 µl/200 µl
Storage	-20°C, pH7.4 PBS, 0.05% NaN ₃ , 40% Glycerol

Product overview

Description	Anti-KDM3B rabbit polyclonal antibody
Applications	ELISA, WB, IHC
Immunogen	Fusion protein of human KDM3B
Reactivity	Human, Mouse
Content	0.4 mg/ml
Host species	Rabbit
Ig class	Immunogen-specific rabbit IgG
Purification	Antigen affinity purification

Target information

Symbol	KDM3B
Full name	lysine (K)-specific demethylase 3B
Synonyms	5qNCA; NET22; C5orf7; JMJD1B
Swissprot	Q7LBC6

Target Background

JMJD1B (jumonji domain containing 1B), also known as KDM3B, 5qNCA (5q Nuclear Co-Activator) or C5orf7, is a member of the JHDM2 histone demethylase family of proteins. Expressed in a wide variety of tissues, JMJD1B localizes to the nucleus and contains one JMJC domain and a C-terminal zinc finger motif. JMJD1B functions as a histone demethylase and, using iron as a cofactor, demethylates lysine-9 of Histone H3. This suggests that JMJD1B plays a central role in the histone code. The gene encoding human JMJD1B is located within the 5q region of the genome that is often deleted in myeloid leukemias and myelodysplasias. This implies that JMJD1B may function as a tumor suppressor of myeloid leukemia. Ectopic expression of JMJD1B exhibits growth suppressive activities, further supporting a role for JMJD1B in tumor suppression.

订购热线: 4008-898-798

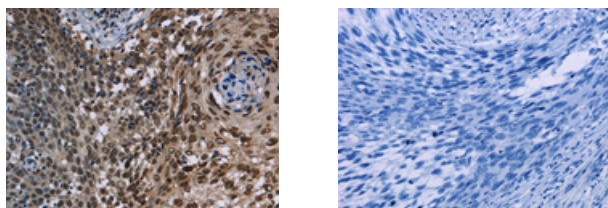
Applications

Immunohistochemistry

Predicted cell location: Nucleus

Positive control: Human cervical cancer

Recommended dilution: 50-200



The image on the left is immunohistochemistry of paraffin-embedded Human cervical cancer tissue using ml122561(KDM3B Antibody) at dilution 1/40, on the right is treated with fusion protein. (Original magnification: $\times 200$)

Western blotting

Predicted band size: 192 kDa

Positive control: Hela and 293T cells, mouse skeletal muscle tissue

Recommended dilution: 1000-5000

Gel: 6% SDS-PAGE

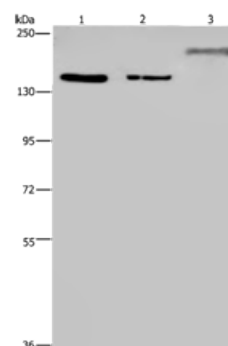
Lysate: 40 μ g

Lane 1-3: Hela cells, 293T cells, mouse skeletal muscle tissue

Primary antibody: ml122561(KDM3B Antibody) at dilution 1/1000

Secondary antibody: Goat anti rabbit IgG at 1/8000 dilution

Exposure time: 1 minute



ELISA

Recommended dilution: 2000-10000

联系电话: 4008-898-798, 021-61725725

联系QQ: 2881505695, 2881505696

邮箱: mlbio_cn@yeah.net

网址: www.mlbio.cn