

## Anti-KIF2A antibody

<b>Cat. No.</b>	ml122586
<b>Package</b>	25 µl/100 µl/200 µl
<b>Storage</b>	-20°C, pH7.4 PBS, 0.05% NaN <sub>3</sub> , 40% Glycerol

### Product overview

<b>Description</b>	Anti-KIF2A rabbit polyclonal antibody
<b>Applications</b>	ELISA, WB, IHC
<b>Immunogen</b>	Fusion protein of human KIF2A
<b>Reactivity</b>	Human, Mouse, Rat
<b>Content</b>	0.6 mg/ml
<b>Host species</b>	Rabbit
<b>Ig class</b>	Immunogen-specific rabbit IgG
<b>Purification</b>	Antigen affinity purification

### Target information

<b>Symbol</b>	KIF2A
<b>Full name</b>	kinesin heavy chain member 2A
<b>Synonyms</b>	HK2; KIF2; CDCBM3
<b>Swissprot</b>	O00139

### Target Background

The protein encoded by this gene is a plus end-directed motor required for normal mitotic progression. The encoded protein is required for normal spindle activity during mitosis and is necessary for normal brain development. Several transcript variants encoding different isoforms have been found for this gene.

订购热线: 4008-898-798

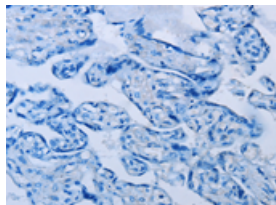
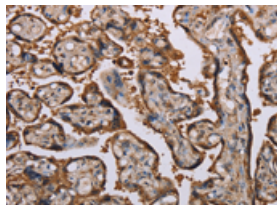
## Applications

### Immunohistochemistry

Predicted cell location: Cytoplasm

Positive control: Human placenta

Recommended dilution: 100-300

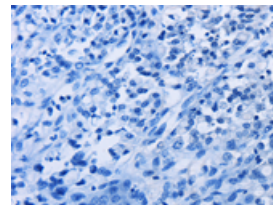
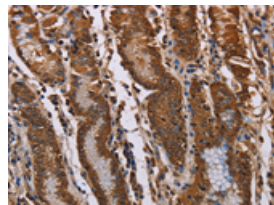


The image on the left is immunohistochemistry of paraffin-embedded Human placenta tissue using ml122586(KIF2A Antibody) at dilution 1/70, on the right is treated with fusion protein. (Original magnification:  $\times 200$ )

Predicted cell location: Cytoplasm

Positive control: Human gastric cancer

Recommended dilution: 100-300



The image on the left is immunohistochemistry of paraffin-embedded Human gastric cancer tissue using ml122586(KIF2A Antibody) at dilution 1/70, on the right is treated with fusion protein. (Original magnification:  $\times 200$ )

### Western blotting

Predicted band size: 80 kDa

Positive control: Hela cells

Recommended dilution: 200-1000

Gel: 6%SDS-PAGE

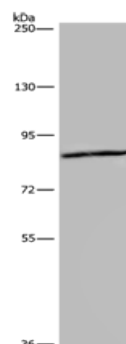
Lysate: 40  $\mu$ g

Lane: Hela cells

Primary antibody: ml122586(KIF2A Antibody) at dilution 1/350

Secondary antibody: Goat anti rabbit IgG at 1/8000 dilution

Exposure time: 20 seconds



### ELISA

Recommended dilution: 1000-2000

联系电话: 4008-898-798, 021-61725725

联系QQ: 2881505695, 2881505696

邮箱: [mlbio\\_cn@yeah.net](mailto:mlbio_cn@yeah.net)

网址: [www.mlbio.cn](http://www.mlbio.cn)