

Anti-LAMB3 antibody

| | |
|-----------------|---|
| Cat. No. | ml122605 |
| Package | 25 µl/100 µl/200 µl |
| Storage | -20°C, pH7.4 PBS, 0.05% NaN ₃ , 40% Glycerol |

Product overview

| | |
|---------------------|---------------------------------------|
| Description | Anti-LAMB3 rabbit polyclonal antibody |
| Applications | ELISA, WB, IHC |
| Immunogen | Fusion protein of human LAMB3 |
| Reactivity | Human, Mouse |
| Content | 0.2 mg/ml |
| Host species | Rabbit |
| Ig class | Immunogen-specific rabbit IgG |
| Purification | Antigen affinity purification |

Target information

| | |
|------------------|----------------------------|
| Symbol | LAMB3 |
| Full name | laminin, beta 3 |
| Synonyms | LAM5; LAMNB1; BM600-125KDA |
| Swissprot | Q13751 |

Target Background

The product encoded by this gene is a laminin that belongs to a family of basement membrane proteins. This protein is a beta subunit laminin, which together with an alpha and a gamma subunit, forms laminin-5. Mutations in this gene cause epidermolysis bullosa junctional Herlitz type, and generalized atrophic benign epidermolysis bullosa, diseases that are characterized by blistering of the skin. Multiple alternatively spliced transcript variants that encode the same protein have been found for this gene.

订购热线: 4008-898-798

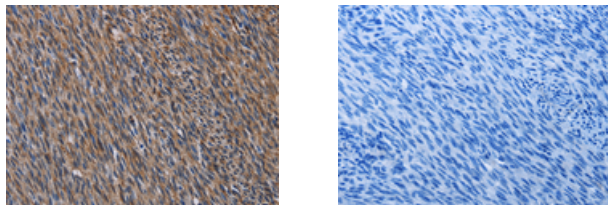
Applications

Immunohistochemistry

Predicted cell location: Cytoplasm

Positive control: Human sarcoma

Recommended dilution: 50-200



The image on the left is immunohistochemistry of paraffin-embedded Human sarcoma tissue using ml122605(LAMB3 Antibody) at dilution 1/40, on the right is treated with fusion protein. (Original magnification: $\times 200$)

Western blotting

Predicted band size: 130 kDa

Positive control: PC3 cells

Recommended dilution: 200-1000

Gel: 6%SDS-PAGE

Lysate: 40 μ g

Lane: PC3 cells

Primary antibody: ml122605(LAMB3 Antibody) at dilution 1/200

Secondary antibody: Goat anti rabbit IgG at 1/8000 dilution

Exposure time: 20 seconds



ELISA

Recommended dilution: 1000-2000

联系电话: 4008-898-798, 021-61725725

联系QQ: 2881505695, 2881505696

邮箱: mlbio_cn@yeah.net

网址: www.mlbio.cn