

Anti-LZTFL1 antibody

Cat. No.	ml122641
Package	25 µl/100 µl/200 µl
Storage	-20°C, pH7.4 PBS, 0.05% NaN ₃ , 40% Glycerol

Product overview

Description	Anti-LZTFL1 rabbit polyclonal antibody
Applications	ELISA, WB, IHC
Immunogen	Fusion protein of human LZTFL1
Reactivity	Human, Mouse, Rat
Content	0.4 mg/ml
Host species	Rabbit
Ig class	Immunogen-specific rabbit IgG
Purification	Antigen affinity purification

Target information

Symbol	LZTFL1
Full name	leucine zipper transcription factor-like 1
Synonyms	BBS17
Swissprot	Q9NQ48

Target Background

This gene encodes a ubiquitously expressed protein that localizes to the cytoplasm. This protein interacts with Bardet-Biedl Syndrome (BBS) proteins and, through its interaction with BBS protein complexes, regulates protein trafficking to the ciliary membrane. Nonsense mutations in this gene cause a form of Bardet-Biedl Syndrome; a ciliopathy characterized in part by polydactyly, obesity, cognitive impairment, hypogonadism, and kidney failure. This gene may also function as a tumor suppressor; possibly by interacting with E-cadherin and the actin cytoskeleton and thereby regulating the transition of epithelial cells to mesenchymal cells. Alternative splicing of this gene results in multiple transcript variants.

订购热线: 4008-898-798

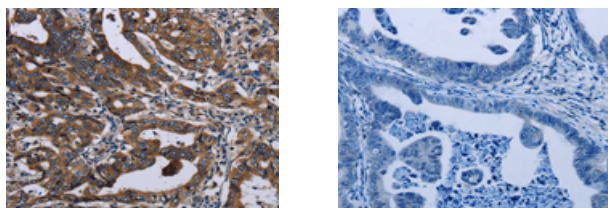
Applications

Immunohistochemistry

Predicted cell location: Cytoplasm

Positive control: Human gasrtic cancer

Recommended dilution: 50-200



The image on the left is immunohistochemistry of paraffin-embedded Human gasrtic cancer tissue using ml122641(LZTFL1 Antibody) at dilution 1/50, on the right is treated with fusion protein. (Original magnification: ×200)

Western blotting

Predicted band size: 35 kDa

Positive control: Human transitional cells carcinoma tissue, 293T and A172 cells, human testis tissue and Hela cells

Recommended dilution: 500-2000

Gel: 8%SDS-PAGE

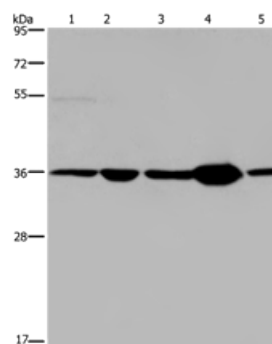
Lysate: 40 µg

Lane 1-5: Human transitional cell carcinoma tissue, 293T cells, A172 cells, human testis tissue, Hela cells

Primary antibody: ml122641(LZTFL1 Antibody) at dilution 1/550

Secondary antibody: Goat anti rabbit IgG at 1/8000 dilution

Exposure time: 20 seconds



ELISA

Recommended dilution: 2000-5000

联系电话: 4008-898-798, 021-61725725

联系QQ: 2881505695, 2881505696

邮箱: mlbio_cn@yeah.net

网址: www.mlbio.cn