

Anti-MAGEA10 antibody

Cat. No.	ml122643
Package	25 µl/100 µl/200 µl
Storage	-20°C, pH7.4 PBS, 0.05% NaN ₃ , 40% Glycerol

Product overview

Description	Anti-MAGEA10 rabbit polyclonal antibody
Applications	ELISA, WB, IHC
Immunogen	Fusion protein of human MAGEA10
Reactivity	Human
Content	0.3 mg/ml
Host species	Rabbit
Ig class	Immunogen-specific rabbit IgG
Purification	Antigen affinity purification

Target information

Symbol	MAGEA10
Full name	melanoma antigen family A, 10
Synonyms	CT1.10; MAGE10
Swissprot	P43363

Target Background

This gene is a member of the MAGEA gene family. The members of this family encode proteins with 50 to 80% sequence identity to each other. The promoters and first exons of the MAGEA genes show considerable variability, suggesting that the existence of this gene family enables the same function to be expressed under different transcriptional controls. The MAGEA genes are clustered at chromosomal location Xq28. They have been implicated in some hereditary disorders, such as dyskeratosis congenita. Alternative splicing results in multiple transcript variants.

订购热线: 4008-898-798

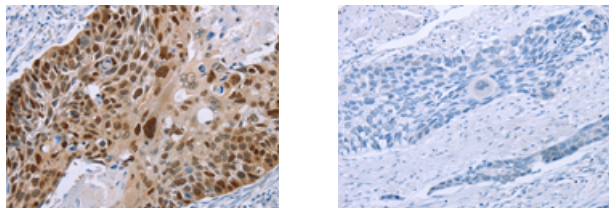
Applications

Immunohistochemistry

Predicted cell location: Nucleus

Positive control: Human esophagus cancer

Recommended dilution: 50-200



The image on the left is immunohistochemistry of paraffin-embedded Human esophagus cancer tissue using ml122643(MAGEA10 Antibody) at dilution 1/50, on the right is treated with fusion protein. (Original magnification: $\times 200$)

Western blotting

Predicted band size: 41 kDa

Positive control: A375 cells

Recommended dilution: 1000-5000

Gel: 8%SDS-PAGE

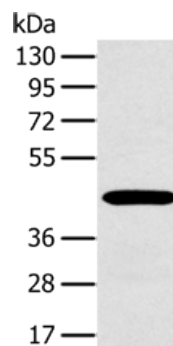
Lysate: 40 μ g

Lane: A375 cells

Primary antibody: ml122643(MAGEA10 Antibody) at dilution 1/400

Secondary antibody: Goat anti rabbit IgG at 1/8000 dilution

Exposure time: 20 seconds



ELISA

Recommended dilution: 2000-10000

联系电话: 4008-898-798, 021-61725725

联系QQ: 2881505695, 2881505696

邮箱: mlbio_cn@yeah.net

网址: www.mlbio.cn