

Anti-MCTS1 antibody

Cat. No.	ml122667
Package	25 µl/100 µl/200 µl
Storage	-20°C, pH7.4 PBS, 0.05% NaN ₃ , 40% Glycerol

Product overview

Description	Anti-MCTS1 rabbit polyclonal antibody
Applications	ELISA, WB, IHC
Immunogen	Fusion protein of human MCTS1
Reactivity	Human
Content	0.3 mg/ml
Host species	Rabbit
Ig class	Immunogen-specific rabbit IgG
Purification	Antigen affinity purification

Target information

Symbol	MCTS1
Full name	malignant T cell amplified sequence 1
Synonyms	MCT1; MCT-1
Swissprot	Q9ULC4

Target Background

MCTS1 (malignant T cell amplified sequence 1), also known as MCT1, is a 181 amino acid protein that is ubiquitously expressed and localizes to the cytoplasm of cells. MCTS1 may play a role in cell cycle regulation by decreasing cell doubling time and by shortening the duration of G1 transit time and G1/S transition. The protein level of Cdk4 and Cdk6 kinases activity and cyclin D1 is enhanced by expression of MCTS1. As a translation enhancer, MCTS1 recruits DENR and binds to the cap complex of the 5'-terminus of mRNAs, subsequently altering the mRNA translation profile. MCTS1 promotes lymphoid tumor development and contributes to the pathogenesis and progression of breast cancer. MCTS1 positively regulates phosphorylation of ERK1 and ERK2.

订购热线: 4008-898-798

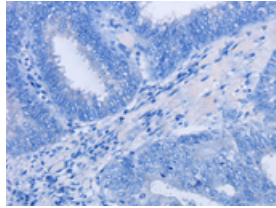
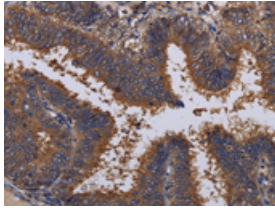
Applications

Immunohistochemistry

Predicted cell location: Cytoplasm or Nucleus

Positive control: Human colon cancer

Recommended dilution: 50-200

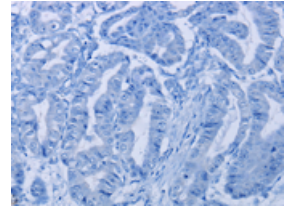
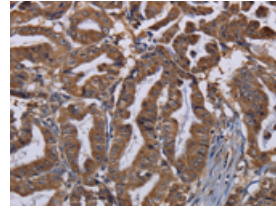


The image on the left is immunohistochemistry of paraffin-embedded Human colon cancer tissue using ml122667(MCTS1 Antibody) at dilution 1/30, on the right is treated with fusion protein. (Original magnification: $\times 200$)

Predicted cell location: Cytoplasm or Nucleus

Positive control: Human esophagus cancer

Recommended dilution: 50-200



The image on the left is immunohistochemistry of paraffin-embedded Human esophagus cancer tissue using ml122667(MCTS1 Antibody) at dilution 1/30, on the right is treated with fusion protein. (Original magnification: $\times 200$)

Western blotting

Predicted band size: 21 kDa

Positive control: Jurkat and K562 cells, PC3 and A549 cells

Recommended dilution: 200-1000

Gel: 10% SDS-PAGE

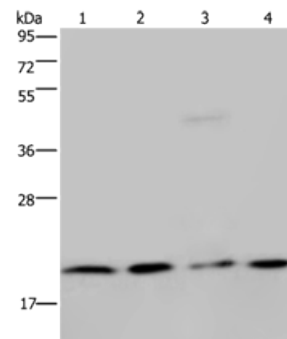
Lysate: 40 μ g

Lane 1-4: Jurkat cells, K562 cells, PC3 cells, A549 cells

Primary antibody: ml122667(MCTS1 Antibody) at dilution 1/200

Secondary antibody: Goat anti rabbit IgG at 1/8000 dilution

Exposure time: 3 minutes



ELISA

Recommended dilution: 1000-2000

联系电话: 4008-898-798, 021-61725725

联系QQ: 2881505695, 2881505696

邮箱: mlbio_cn@yeah.net

网址: www.mlbio.cn