

## Anti-MIER2 antibody

<b>Cat. No.</b>	ml122689
<b>Package</b>	25 µl/100 µl/200 µl
<b>Storage</b>	-20°C, pH7.4 PBS, 0.05% NaN <sub>3</sub> , 40% Glycerol

### Product overview

<b>Description</b>	Anti-MIER2 rabbit polyclonal antibody
<b>Applications</b>	ELISA, WB, IHC
<b>Immunogen</b>	Fusion protein of human MIER2
<b>Reactivity</b>	Human, Mouse
<b>Content</b>	0.3 mg/ml
<b>Host species</b>	Rabbit
<b>Ig class</b>	Immunogen-specific rabbit IgG
<b>Purification</b>	Antigen affinity purification

### Target information

<b>Symbol</b>	MIER2
<b>Full name</b>	mesoderm induction early response 1, family member 2
<b>Synonyms</b>	Mi-er2; KIAA1193
<b>Swissprot</b>	Q8N344

### Target Background

MIER2(mesoderm induction early response 1, family member 2), also known as Mi-er2 or KIAA1193, is a protein that in humans is encoded by the MIER2 gene. It is a transcriptional repressor.

订购热线: 4008-898-798

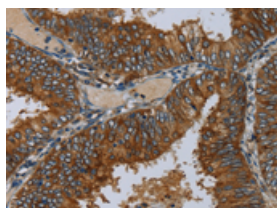
## Applications

### Immunohistochemistry

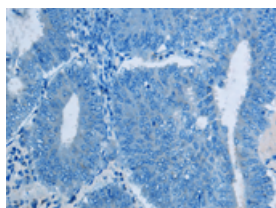
Predicted cell location: Cytoplasm

Positive control: Human colon cancer

Recommended dilution: 100-300



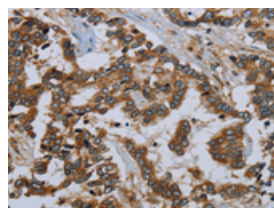
The image on the left is immunohistochemistry of paraffin-embedded Human colon cancer tissue using ml122689(MIER2 Antibody) at dilution 1/50, on the right is treated with fusion protein. (Original magnification:  $\times 200$ )



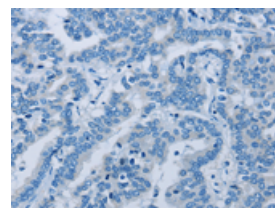
Predicted cell location: Cytoplasm

Positive control: Human liver cancer

Recommended dilution: 100-300



The image on the left is immunohistochemistry of paraffin-embedded Human liver cancer tissue using ml122689(MIER2 Antibody) at dilution 1/50, on the right is treated with fusion protein. (Original magnification:  $\times 200$ )



### Western blotting

Predicted band size: 60 kDa

Positive control: Hela cells

Recommended dilution: 200-1000

Gel: 6%SDS-PAGE

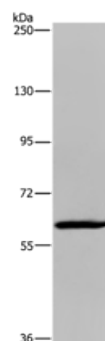
Lysate: 40  $\mu$ g

Lane: Hela cells

Primary antibody: ml122689(MIER2 Antibody) at dilution 1/550

Secondary antibody: Goat anti rabbit IgG at 1/8000 dilution

Exposure time: 10 minutes



### ELISA

Recommended dilution: 1000-2000

联系电话: 4008-898-798, 021-61725725

联系QQ: 2881505695, 2881505696

邮箱: [mlbio\\_cn@yeah.net](mailto:mlbio_cn@yeah.net)

网址: [www.mlbio.cn](http://www.mlbio.cn)