

## Anti-NDUFA5 antibody

<b>Cat. No.</b>	ml122739
<b>Package</b>	25 µl/100 µl/200 µl
<b>Storage</b>	-20°C, pH7.4 PBS, 0.05% NaN <sub>3</sub> , 40% Glycerol

### Product overview

<b>Description</b>	Anti-NDUFA5 rabbit polyclonal antibody
<b>Applications</b>	ELISA, WB, IHC
<b>Immunogen</b>	Fusion protein of human NDUFA5
<b>Reactivity</b>	Human, Mouse, Rat
<b>Content</b>	0.7 mg/ml
<b>Host species</b>	Rabbit
<b>Ig class</b>	Immunogen-specific rabbit IgG
<b>Purification</b>	Antigen affinity purification

### Target information

<b>Symbol</b>	NDUFA5
<b>Full name</b>	NADH dehydrogenase (ubiquinone) 1 alpha subcomplex, 5
<b>Synonyms</b>	B13; NUFM; UQOR13; CI-13kB; CI-13KD-B
<b>Swissprot</b>	Q16718

### Target Background

This nuclear gene encodes a conserved protein that comprises the B13 subunit of complex I of the mitochondrial respiratory chain. The encoded protein localizes to the inner mitochondrial membrane, where it is thought to aid in the transfer of electrons from NADH to ubiquinone. Alternative splicing results in multiple transcript variants. There are numerous pseudogenes of this gene on chromosomes 1, 3, 6, 8, 9, 11, 12, and 16.

订购热线: 4008-898-798

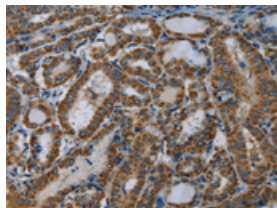
## Applications

### Immunohistochemistry

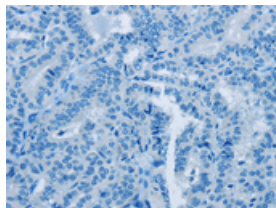
Predicted cell location: Cytoplasm

Positive control: Human thyroid cancer

Recommended dilution: 100-300



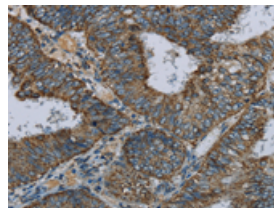
The image on the left is immunohistochemistry of paraffin-embedded Human thyroid cancer tissue using ml122739(NDUFA5 Antibody) at dilution 1/60, on the right is treated with fusion protein. (Original magnification:  $\times 200$ )



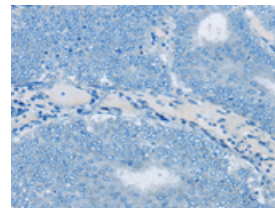
Predicted cell location: Cytoplasm

Positive control: Human colon cancer

Recommended dilution: 100-300



The image on the left is immunohistochemistry of paraffin-embedded Human colon cancer tissue using ml122739(NDUFA5 Antibody) at dilution 1/60, on the right is treated with fusion protein. (Original magnification:  $\times 200$ )



### Western blotting

Predicted band size: 13 kDa

Positive control: Human hepatocellular carcinoma and fetal brain tissue

Recommended dilution: 500-2000

Gel: 8%SDS-PAGE

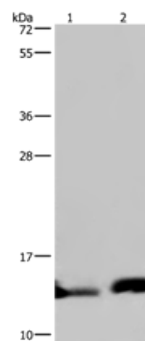
Lysate: 40  $\mu$ g

Lane 1-2: Human hepatocellular carcinoma tissue, Human fetal brain tissue

Primary antibody: ml122739(NDUFA5 Antibody) at dilution 1/400

Secondary antibody: Goat anti rabbit IgG at 1/8000 dilution

Exposure time: 20 seconds



### ELISA

Recommended dilution: 2000-5000

联系电话: 4008-898-798, 021-61725725

联系QQ: 2881505695, 2881505696

邮箱: [mlbio\\_cn@yeah.net](mailto:mlbio_cn@yeah.net)

网址: [www.mlbio.cn](http://www.mlbio.cn)