

Anti-SCGB2A1 antibody

Cat. No.	ml122845
Package	25 µl/100 µl/200 µl
Storage	-20°C, pH7.4 PBS, 0.05% NaN ₃ , 40% Glycerol

Product overview

Description	Anti-SCGB2A1 rabbit polyclonal antibody
Applications	ELISA, WB, IHC
Immunogen	Fusion protein of human SCGB2A1
Reactivity	Human
Content	1.2 mg/ml
Host species	Rabbit
Ig class	Immunogen-specific rabbit IgG
Purification	Antigen affinity purification

Target information

Symbol	SCGB2A1
Full name	secretoglobin, family 2A, member 1
Synonyms	LPHC; LPNC; MGB2; UGB3
Swissprot	O75556

Target Background

SCGB2A1 may bind androgens and other steroids, may also bind estramustine, a chemotherapeutic agent used for prostate cancer. It may be under transcriptional regulation of steroid hormones.

订购热线: 4008-898-798

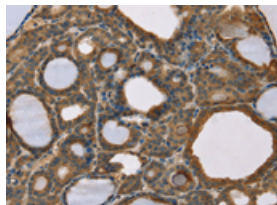
Applications

Immunohistochemistry

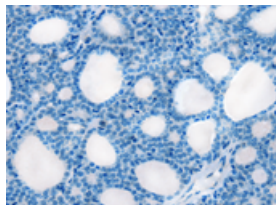
Predicted cell location: Cytoplasm

Positive control: Human thyroid cancer

Recommended dilution: 100-300



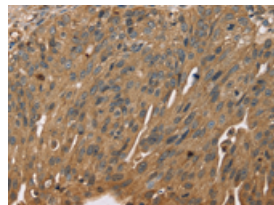
The image on the left is immunohistochemistry of paraffin-embedded Human thyroid cancer tissue using ml122845(SCGB2A1 Antibody) at dilution 1/50, on the right is treated with fusion protein. (Original magnification: $\times 200$)



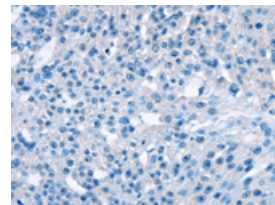
Predicted cell location: Cytoplasm

Positive control: Human breast cancer

Recommended dilution: 100-300



The image on the left is immunohistochemistry of paraffin-embedded Human breast cancer tissue using ml122845(SCGB2A1 Antibody) at dilution 1/50, on the right is treated with fusion protein. (Original magnification: $\times 200$)



Western blotting

Predicted band size: 11 kDa

Positive control: Human liver cancer tissue lysate

Recommended dilution: 500-2000

Gel: 12% SDS-PAGE

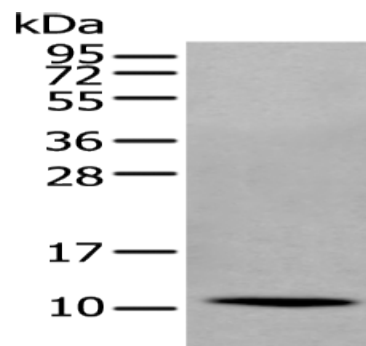
Lysate: 40 μ g

Lane: Human liver cancer tissue lysate

Primary antibody: ml122845(SCGB2A1 Antibody) at dilution 1/400

Secondary antibody: Goat anti rabbit IgG at 1/8000 dilution

Exposure time: 30 seconds



ELISA

Recommended dilution: 5000-10000

联系电话: 4008-898-798, 021-61725725

联系QQ: 2881505695, 2881505696

邮箱: mlbio_cn@yeah.net

网址: www.mlbio.cn